

left open to severe conditions such as drought, frost, and periods of fungal sporulation (autumn). Table 1 below gives the appropriate time to prune for a number of species commonly planted or found growing naturally within the United Kingdom and Northern Ireland and also indicates species specific tolerance to pruning.

It should be noted that in most circumstances, unless there is a potentially hazardous structural defect that needs to be addressed, it is always best to prune trees as little as possible, as removing large amounts of wood and foliage reduces the ability of the tree to photosynthesise and can put the tree under significant stress.

Please note: Trees may be legally protected and unauthorised work can lead to prosecution. It is also your responsibility to ensure that protected wildlife is not harmed. Further advice can be found on our website at trees.org.uk/Help-and-Advice

Historically wound paint has been applied to the wounds of freshly pruned branches, however, research has shown that these paints can inhibit the trees ability to compartmentalise or zone off the wound, increase the risk of decay by trapping moisture behind the painted seal and in some instance be a food source for canker pathogens. Therefore the application of wound paint should be avoided.

When pruning a small diameter branch, a sharp pair of 'by-pass' secateurs should be used as they will minimise the risk of tearing the wood and harming its ability to produce the callus tissue that will eventually cover the wounds. 'Anvil' type secateurs can crush the soft tissue around the wound slowing the growth of callus tissue. Larger branches and limbs that cannot be removed with the secateurs should be removed with a sharp pruning saw. Great care must be taken when using pruning saws and manufacturer's instructions should be followed. Pruning saws are very sharp and are designed to cut through wood, and as such can cause serious injury to the user if not used correctly.

When the pruning has been completed all the equipment used should be cleaned with a suitable disinfectant to reduce the potential for spreading disease to other trees or other areas of the garden. Maintaining sharp tools is also essential to good pruning. Blunt pruning saws, secateurs or loppers will increase the effort required to carry out the pruning which can increase the risk of injury; in addition blunt hand tools will cause more damage to the soft tissues of the branch being removed.

Table 1 - Species tolerance to pruning and optimum time to prune.

Species	Tolerance to hard pruning Good, Fair or Poor	Optimum time to prune	Notes
Deciduous trees			
Acacia	Fair	Spring (late)	Living wood most obvious, dead can be easily identified
Ailanthus	Fair	Spring (late) to summer	
Alder	Fair	Spring (late) to summer	
Apple	Good	Winter (mid)	Prune every year for fruit production
Ash	Fair	Spring (late) to summer	
Beech	Poor	Spring (late) to summer	
Birch	Poor	Summer or winter (mid)	Prone to bleeding
Cherry (& other Prunus sp. e.g. Almond, Apricot, Peach, Plum)	Fair	Summer	Prone to drought, frost damage and Silver leaf. Avoid fungal sporulation period (autumn)
Elm	Good	Spring (late) to summer	
Eucalyptus	Poor	Spring (late) to summer	
Hornbeam	Poor	Spring (late) to summer	
Horse Chestnut	Good	Spring (late) to summer	Avoid if possible as regrowth is weak and heartwood is quick to decay
Lime	Good	Spring (late) to summer	
Magnolia	Fair	Summer (mid)	Reduces bleeding and allows time for healing to begin
Maples (inc Sycamore)	Fair	Summer or winter (mid)	Prone to bleeding (Field maple less susceptible)
Mulberry	Good	Winter (mid)	
Oak	Good	Spring (late) to summer	

Species	Tolerance to hard pruning Good, Fair or Poor	Optimum time to prune	Notes
Plane	Good	Spring (late) to summer	
Poplar	Good	Winter (mid)	Prone to bleeding
Robinia	Good	Summer (mid to late)	Prone to bleeding
Rowan	Fair	Spring (late) to summer	
Walnut	Poor	Summer or winter (mid)	Prone to bleeding
Whitebeam	Poor	Spring (late) to summer	
Willow	Good	Spring (late) to summer	
Evergreen trees			
Cedars	Poor	Winter (mid to late)	Avoid any pruning if possible. Shoots will not grow from old wood – therefore prune lightly.
Cypresses	Poor	Spring (late) to summer (early)	Shoots will not grow from old wood – therefore prune lightly
Firs	Poor	Summer (late) or winter (late)	Avoid any pruning if possible. Shoots will not grow from old wood – therefore prune lightly
Hemlock	Fair	Summer (late) or winter (late)	
Holly	Fair	Winter (mid to late)	
Holm oak	Poor	Winter (mid to late)	
Pines	Poor	Spring (late)	Avoid any pruning if possible as buds only at shoot tips. Newest growth can be removed during the spring
Spruce	Poor	Summer (late) or winter (late)	Shoots will not grow from old wood – therefore prune lightly
Western red cedar	Fair	Winter (mid to late)	
Yew	Fair	Summer (late) or winter (late)	

Our acknowledgements and thanks go to Andrew Gale and Alastair Durkin for compiling this guide.



Arboricultural Association
The Malthouse, Stroud Green, Standish, Stonehouse, Gloucestershire GL10 3DL
www.trees.org.uk

Arboricultural Association Ltd.
A company registered in England at The Malthouse, Stroud Green, Standish, Stonehouse, Gloucestershire GL10 3DL, UK. Company number 4070377.
The Arboricultural Association is a registered charity no. 1083845.

Re-published: February 2024



Arboricultural Association

GUIDE TO TREE PRUNING



The home of tree care

Tree Pruning is part of a series of general information leaflets produced by the Arboricultural Association.

The Association provides membership services, accreditation and support to 3,200 professional arborists in the UK and further afield.

Should you require further information about the care of your trees please visit **trees.org.uk** where you can see details about finding and employing professional arborists to provide advice and contracting services.

We strongly recommend that you use an accredited ARB Approved Contractor or AA Registered Consultant who has been vetted and approved by the Arboricultural Association.

You can find an accredited tree surgeon or consultant though our directories at **trees.org.uk/Find-a-professional**

Please note the association is not able to provide direct advice to the general public.

PRUNING – WHY, HOW AND WHEN

How a tree works

Before we discuss pruning, we need to consider what a tree is and how it works. An appreciation of the processes involved in the growth of tree will help us to understand the principles behind pruning.

A tree is a dynamic living organism that has a self-supporting woody stem. Through the process of photosynthesis the tree converts carbon from the atmosphere into sugars, which it uses to make the building blocks of cellulose and lignin required to sustain its self-supporting structure. The sugars produced are transported throughout the tree via the inner bark area, known as the phloem, to where they are required; sugars not immediately required are stored within the trunk, branches and rooting system.

The tree roots absorb water and other essential nutrients and minerals from the soil, which are then transported to the leaves via tubular vessels called xylem. The minerals, along with the sugars produced via photosynthesis, are used to produce the flower and subsequently fruit to advance the next generation of trees.

Why prune your tree?

There are many reasons why trees might need pruning. These reasons could include:

- Improving the structure of the tree
- The removal of dangerous or defective branches.
- Reduction of shading
- Reduction of wind loading
- Provide clearance between the tree and a structure, road or pathway.

Care must always be taken when pruning, as removing too big a branch can lead to disease entering the tree via the wound/s left behind, or reduce the vitality of tree due to the excessive volume of leaf bearing material being removed.

Before any branch is removed the following questions should be asked:

- Will it leave a large wound?
- Will it remove a large area of leaf bearing material?
- Will it leave the tree open to an increased risk of disease?

If the questions above can be answered with a “No” then the removal of the branch can proceed. It is very important to realise however, that the removal of tree branches can be a dangerous process and the safest option, particularly if the branch cannot be reached from the ground, is to employ a suitable trained and insured arborist (also known as a tree surgeon). A list of Arboricultural Association ARB Approved Contractors is available on our web site at trees.org.uk/Find-a-professional

How to prune a tree

Branches were once buds that became twigs, and over time and incremental growth, have gone on to form a branch. As the tree produces an annual ring of growth, so does the branch, strengthening the attachment of the branch to the tree. This attachment point will sometimes exhibit a strip of raised bark known as a ‘branch bark ridge’ on the top and sides of the branch and a ‘branch collar’, which is the area around the base of the branch.

To keep the wound as small as possible, the British Standard for tree work (*BS 3998: 2010 Tree Work – Recommendations*) states that the diameter of the final cut should not exceed one third of that of the parent branch or stem.

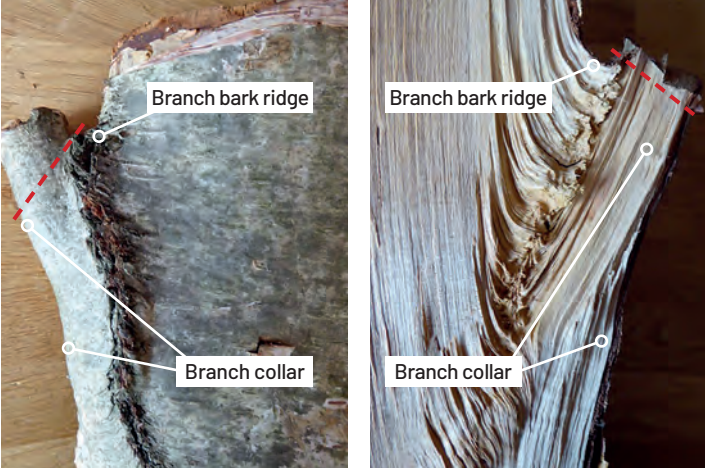


Figure 1 – Optimum position of the final pruning cut

To remove the branch, a sequence of step cuts should be made with a shallow cut being made first on the underside leading to a top cut outside i.e. past, the underside cut. This will reduce the risk of the branch tearing down the stem and leaving an unsightly and potentially damaging wound; the final pruning cut can then be made at the branch bark ridge and branch collar.

When removing a branch, the final cut should be made from the branch bark ridge to the branch collar, along the red dotted line in figure 1. By following the imaginary red dotted line, the size of wound, in relation to the parent stem, will be left as small as possible. Some branches do not form a distinct branch collar, where this occurs, the cut should be made so as not to damage the branch bark ridge whilst leaving a small diameter wound.

If a large diameter branch is removed, the risk of disease entering the wound increases. Certain fungi and bacteria can enter the tree via these wounds and cause the woody structure of the tree to decay. Although decay is a normal process in terms of a trees life cycle, advancing this process by incorrect pruning can have serious consequences by compromising the health and structural integrity of the tree.

When to prune

If the decision has been made to prune or remove a branch, then a decision has to be made when to carry out the work. Pruning should generally occur after the leaves have ‘flushed’ and hardened, so late spring through summer. There are some exceptions, however, as some species such as Birch, Walnut and Maples, will ‘bleed’ sap and risk losing valuable sugars in the process if pruned in early spring, therefore the pruning of these trees should be carried out when this risk is low i.e. summer or mid winter.

Species belonging to the genus *Prunus* such as Cherry partially rely on the production of a resin or gum to aid in the defence against wound related pathogens, therefore pruning should occur in the summer. In general, pruning should avoid periods where the exposed wood will be

