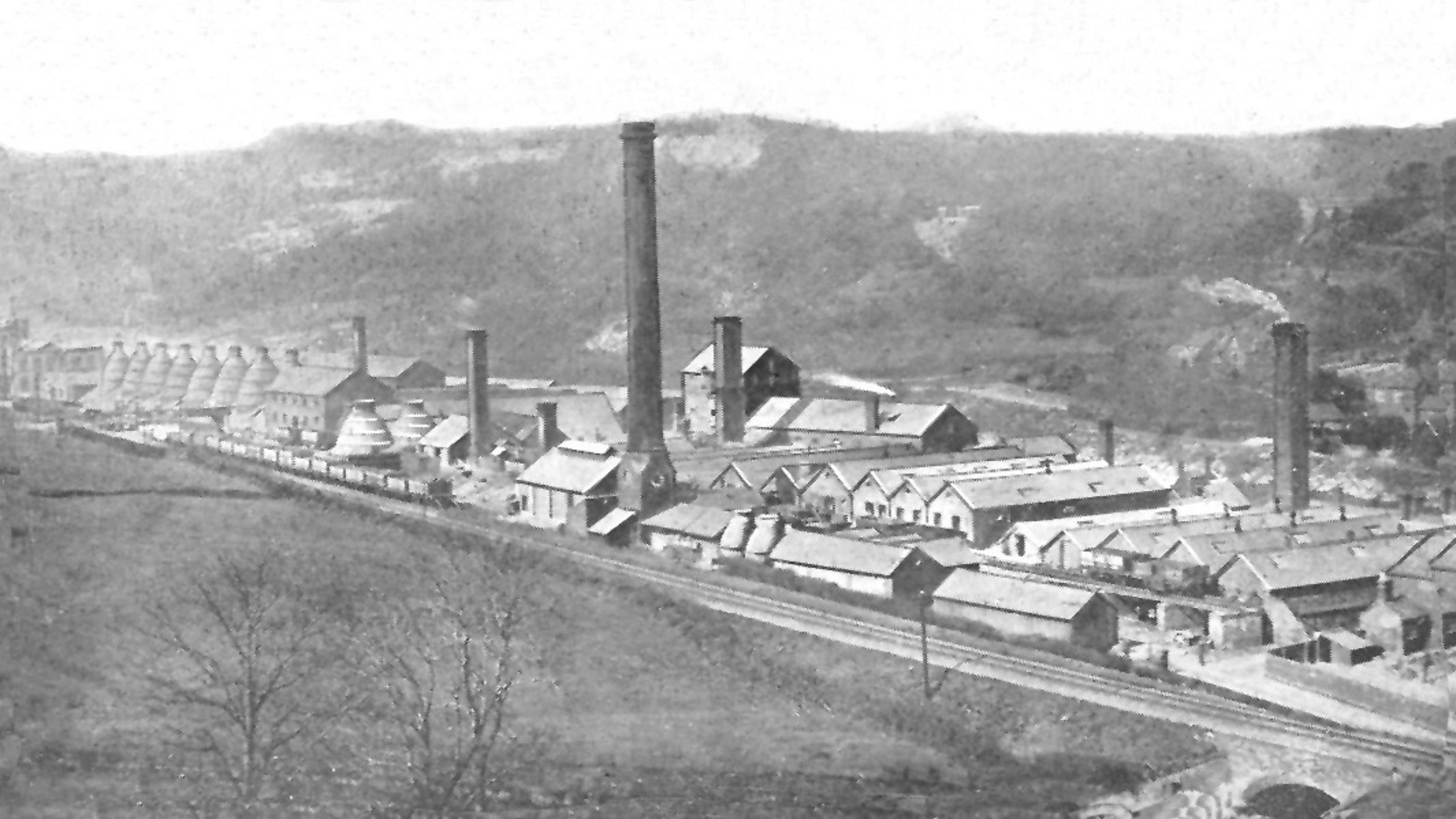


Telford – The First 50 years, Wasteland to Forest City

by Matthew Seabrook















Silkin Way – 14 miles long





Between 1963 & 1968 £9.8 million was awarded to Dawley Development Corporation

Up to 1978 the total had risen to £172.7 million (£8.3 million on landscaping)


By 1982 the figures had soared to £299.3 million (£17.5 million on landscaping)

& by 1986 the total amount of borrowing peaked at £341.5 million (£21 million on landscaping)

£-567 million

In 1986 Ironbridge Gorge was awarded
World Heritage Status and Government
wiped £440million Off
the debt!





5230 acres of derelict land- 8.17 sq miles, or 3,954 full size football fields

2957 (known) abandoned mineshafts

833 acres of opencast and disused quarries

121 miles of abandoned canals, railways and mineral tramways

3733 acres of underground shallow workings and subsided land- 5.83 sq miles, or 2,821 full size football fields



Surface
Geology

3D
Models

Borehole
Scans

Earthquake
Timeline

Surface Geology

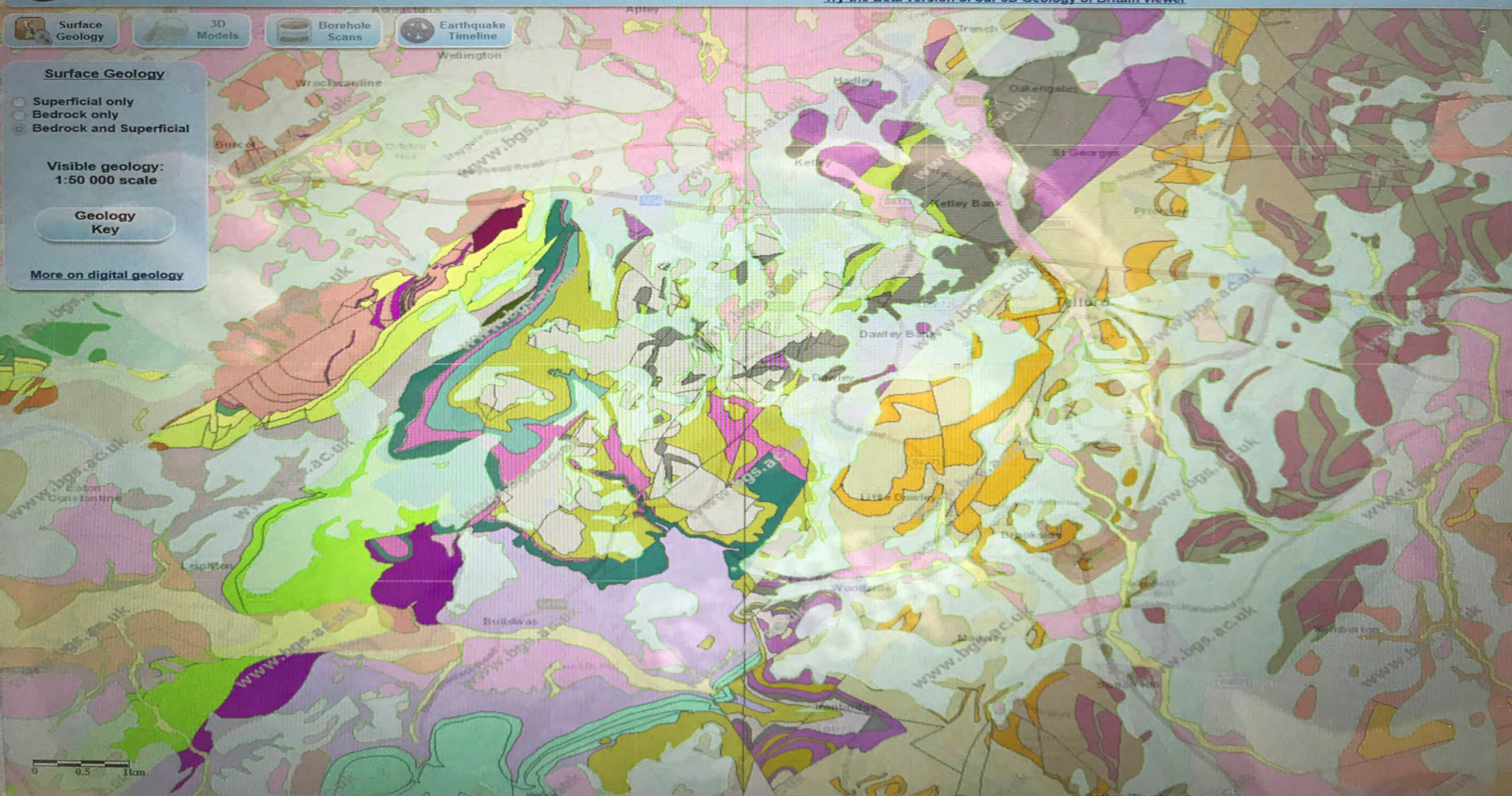
- ☐ Superficial only
- ☐ Bedrock only
- ☒ Bedrock and Superficial

Visible geology:
1:50 000 scale

Geology
Key

[More on digital geology](#)

0 0.5 1km









Geology of Britain viewer

Try the Beta version of our 3D Geology of Britain viewer



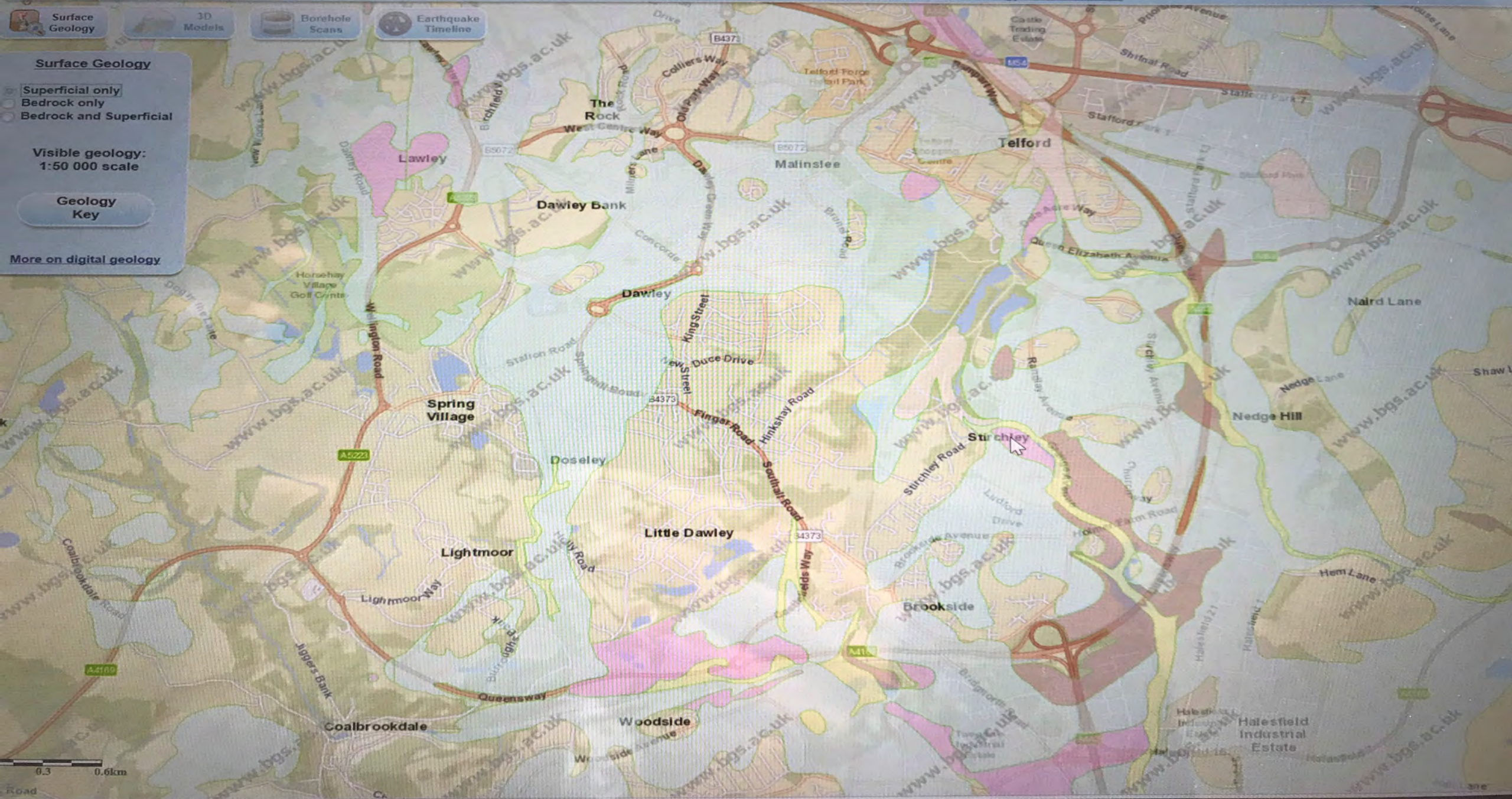
Surface Geology

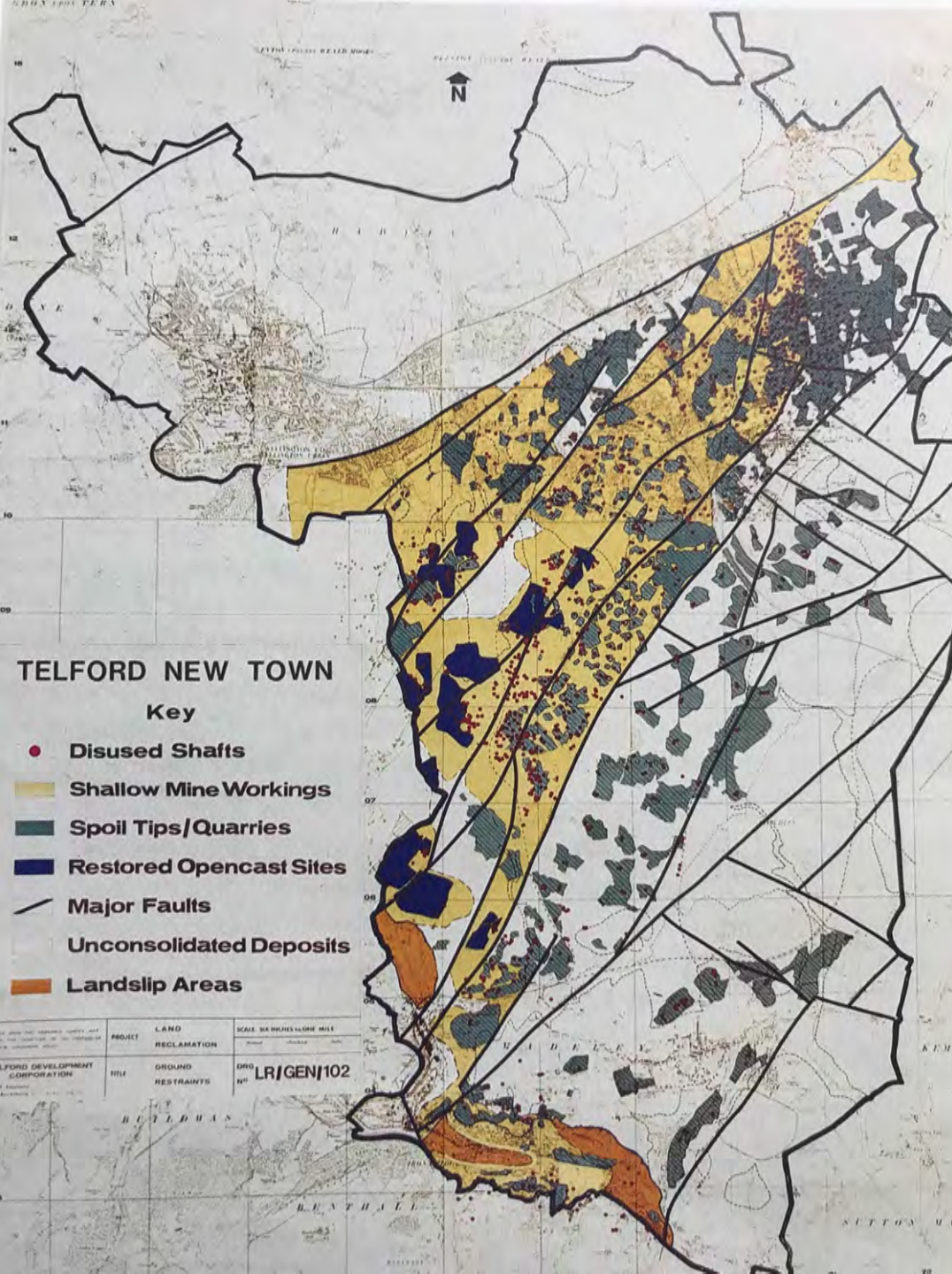
- ☒ Superficial only
- ☐ Bedrock only
- ☐ Bedrock and Superficial

Visible geology:
1:50 000 scale

Geology
Key

[More on digital geology](#)





Yellow – shallow mine workings

Grey – Spoil tips / quarries

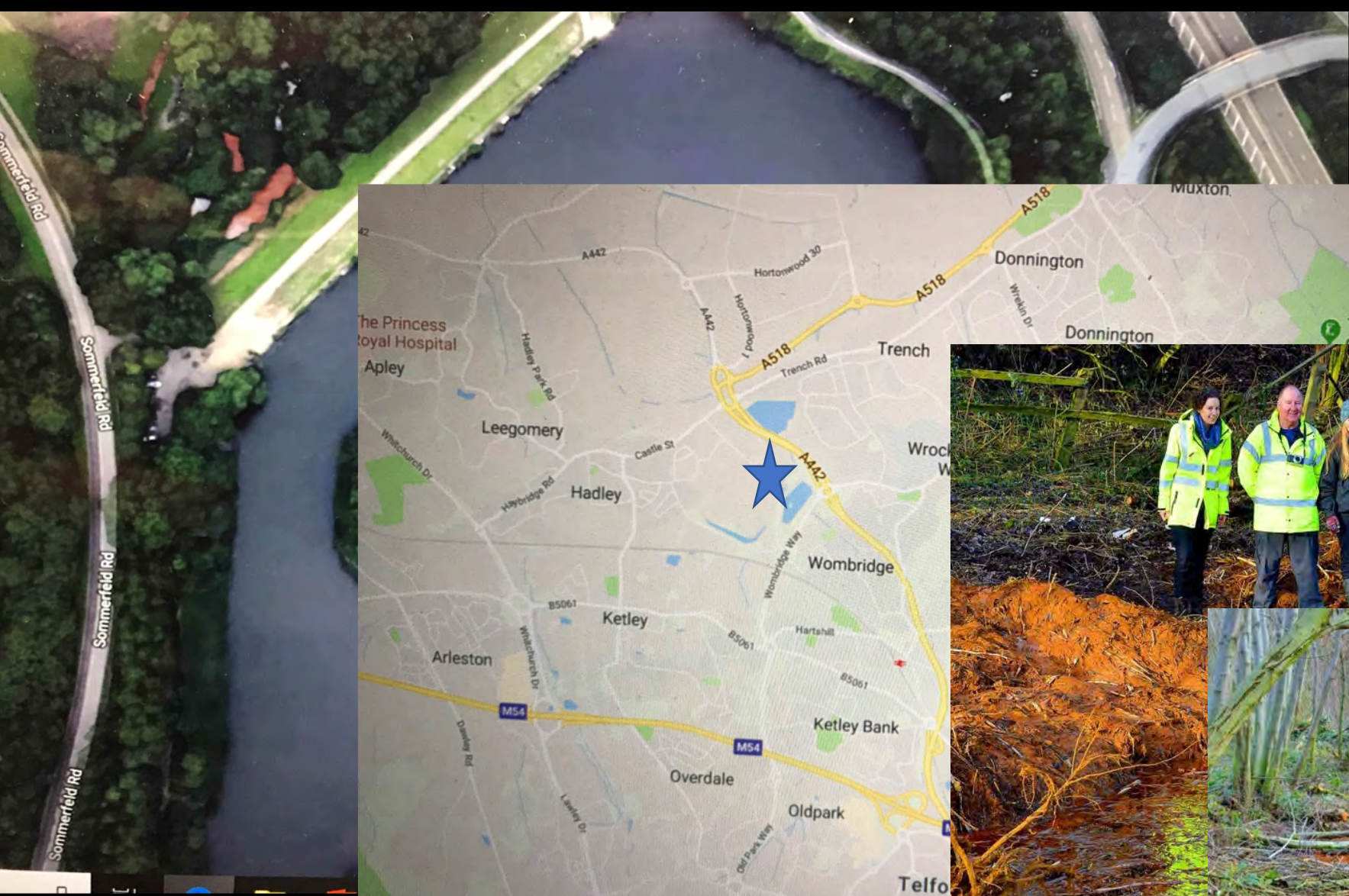
Blue – restored opencast mines

/ - Major faults

Orange – landslip areas









Telford & Wrekin
COUNCIL

In November 2017 the WMCA awarded T& W Council £3.7 million to
Help clean up brownfield sites for development



Landscaping





Hybrid Poplar



Raywood Ash



Italian Alder

Silver Maple

Norway Maple























