

Every tree counts, everywhere:
a voice for remediation and
collaboration at scale

Nick Atkinson



WOODLAND
TRUST





The Woodland Trust

For a UK landscape rich in native
woods and trees, for the benefit of
people and wildlife

Driven by principles. Informed by evidence

- **Prioritise native woods and trees**
- **Take account of whole ecosystems, landscapes and catchments**
- **Consider the geographical and historical context to inform the future**
- **Actively create and manage woods and trees**
- **Secure the many values of woods and trees for the long-term**
- **Put people at the heart of conservation**



Ancient woodland restoration

Ancient woods have been around for many centuries – long enough to develop into ecosystems that are rich, complex and irreplaceable.

Officially **it is woodland that has existed since 1600AD**, but many are much older than this. Some may even link back to the original woodland that covered the UK around 10,000 years ago after the last Ice Age.

Much of what remains has been damaged by planting with non-native conifers or colonisation by invasive species.

Thanks to funding from the Heritage Lottery Fund, we launched the Ancient Woodland Restoration Programme, working closely with landowners to **restore what is left of our ancient woodland**. Careful woodland management to let in sunlight encourages native species to thrive again, reversing years of damage.



Thank you

Thank you to both the National Lottery Players and the Heritage Lottery Fund for your £1.9 million grant, which has enabled us to deliver the Ancient Woodland Restoration Programme nationwide. With your support we have:


- Worked with 564 individual landowners
- Surveyed over 23,000 hectares of threatened ancient woodland
- Committed 15,960 hectares into a process of restoration
- Recruited 134 volunteers who carried out over 2,400 days of volunteer work to help maintain and protect ancient woodlands


Thank you to all of our wonderful volunteers, woodland owners, our project partners and the Ancient Woodland Restoration team who have made this project such a success. We look forward to many more years of being able to protect these precious habitats through the legacy of the project.





Supported by

 **The National Lottery®**
through the Heritage Lottery Fund

 heritage
lottery fund

Have you met your neighbours?

I'm improving your health

Trees reduce air pollution and keep our cities shaded and cool.

I'm elevating house prices

It's a fact, house prices increase on streets that have trees

I'm creating habitats for wildlife

Trees are important ecosystems, providing homes and food for wildlife.

I can prevent flooding

Trees protect soil from erosion, reduce surface run off and can even slow large floods



“Overall, an estimated **1.4 billion kg of air pollutants were removed by woodlands**, plants, grasslands and other UK vegetation in 2015, according to a study produced for the UK Natural Capital accounts by the Centre for Ecology and Hydrology.”

“To put this in context, **over five times** as much PM_{2.5} was emitted in the UK in 2015, than was removed by vegetation in 2015.”

“This pollution removal **saved the UK around £1 billion** in avoided health damage costs³. It is estimated there were 7,100 fewer lung and heart-related hospital admissions, 27,000 fewer life years lost and 1,900 fewer premature deaths in 2015 as result of nature providing this service.”

“Trees in particular provide a wide range of services and account for most of the volume of air pollutants absorbed by natural vegetation in the UK **but can have adverse effects also.**”

Woodland creation



We are creating thousands of new woodlands across the UK. Working with volunteers and landowners we are enriching local landscapes and unlocking the benefits of natural woodlands for future generations. (Photo: N Benvie/WTML)



Want to plant trees?



We offer trees, advice and support to individuals and communities

[Find out how we can help](#)

Our Centenary Woods mean we'll never forget them



The most exciting woodland creation project in our history has begun. Help us create four beautiful new woods.

[Donate now](#)





The Northern Forest



 **25**
years

 **50 million**
trees

 **£500m**
over 25 years

Source: Woodland Trust





My feet hurt.
Trees need
space too.
Squash my
roots and I fall
over.

My feet hurt.
Trees need
space too.
Squash my
roots and I fall
over.





Ancient woods
need
**BETTER
PROTECTION**

WE
WANT

OUR
WOOD

HANDS
OFF

OUR
HERITAGE

Life's **better**
with **trees**

NO development
on ancient
woods

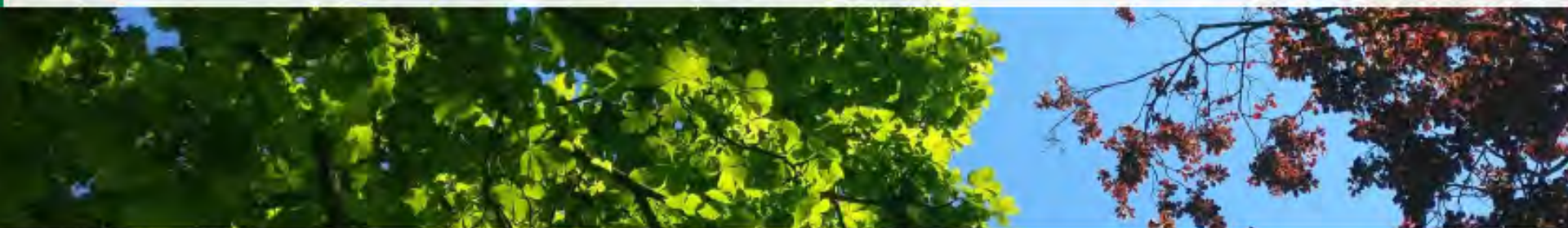

WOODLAND
TRUST

Save ancient Smithy Wood
woodlandtrust.org.uk/campaigning


WOODLAND
TRUST

Say NO
to offsetting
it woodland


WOODLAND
TRUST



Greater Protection for Ancient and Veteran Trees In Revised National Planning Policy Framework (NPPF)



26/07/2018

Last Updated: 30/07/2018

The Arboricultural Association is pleased to welcome the Governments' newly revised National Planning Policy Framework, which gives ancient and veteran trees greater protection. Under the guidelines published this week they will only be removed for 'exceptional reasons'. Congratulations to our friends at the Ancient Tree Forum and The Woodland Trust after their dedicated campaigning for these improvements.





Welcome to the Ancient Tree Inventory

Mapping the oldest and most important trees in the UK.

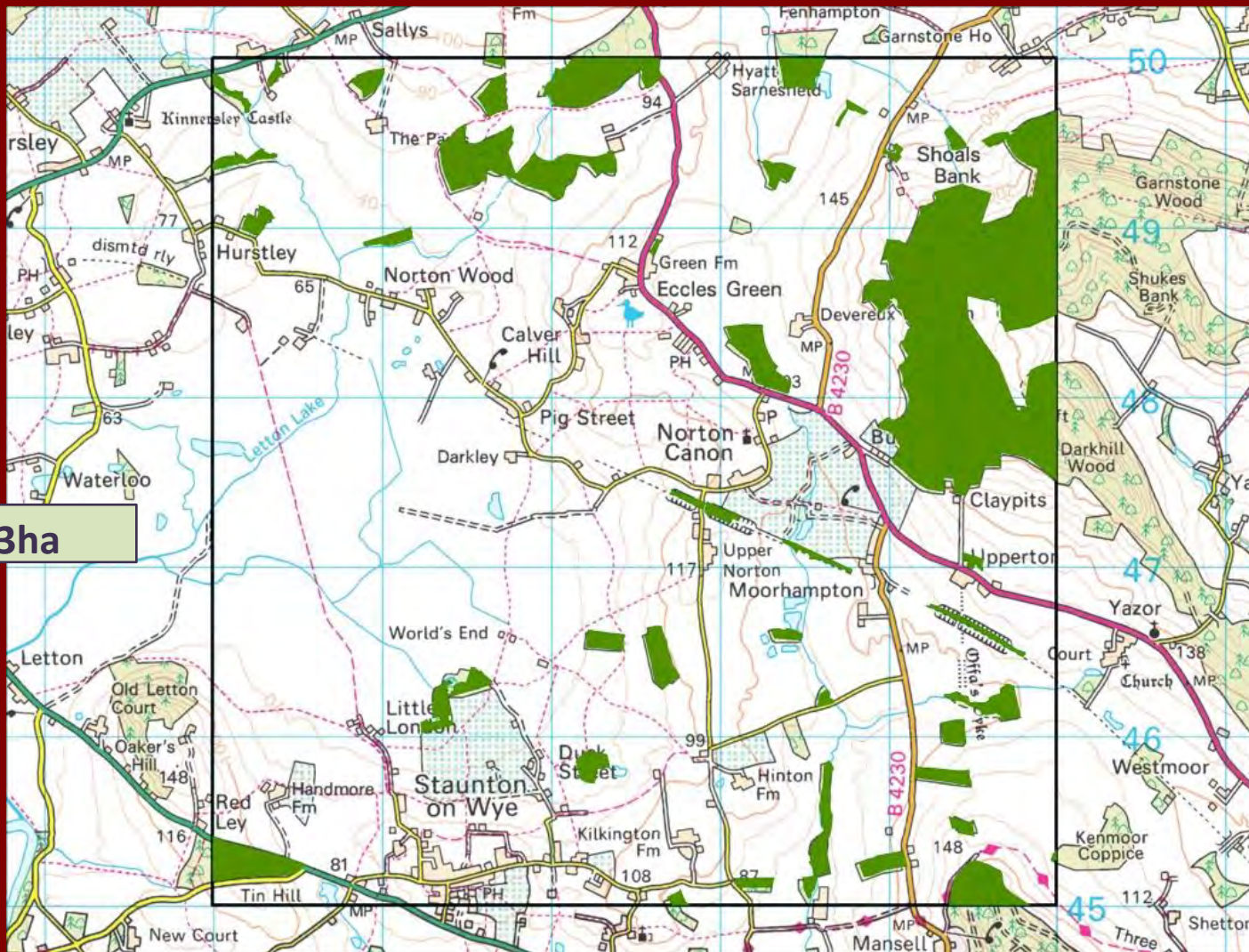
They are among the oldest organisms on the planet. They can live for thousands of years. And there are more of them in the UK than many other European countries. Yet most are not protected.

Help protect our valuable tree heritage. Let us know if you see any ancient or old trees and put them on the map. There are already 160,000 trees listed but there are thousands more to add. We need your help to find them.

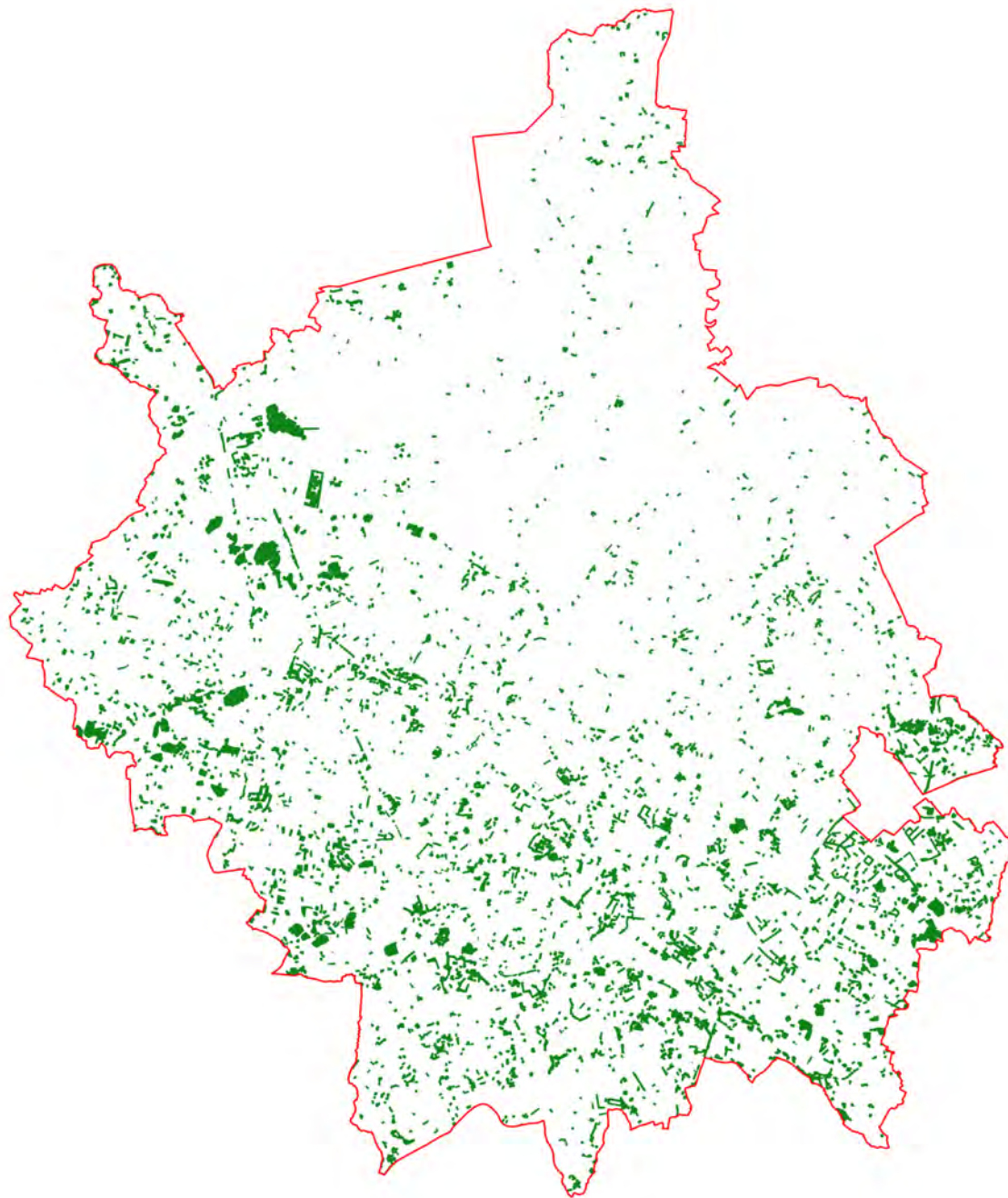
[Add a tree](#)





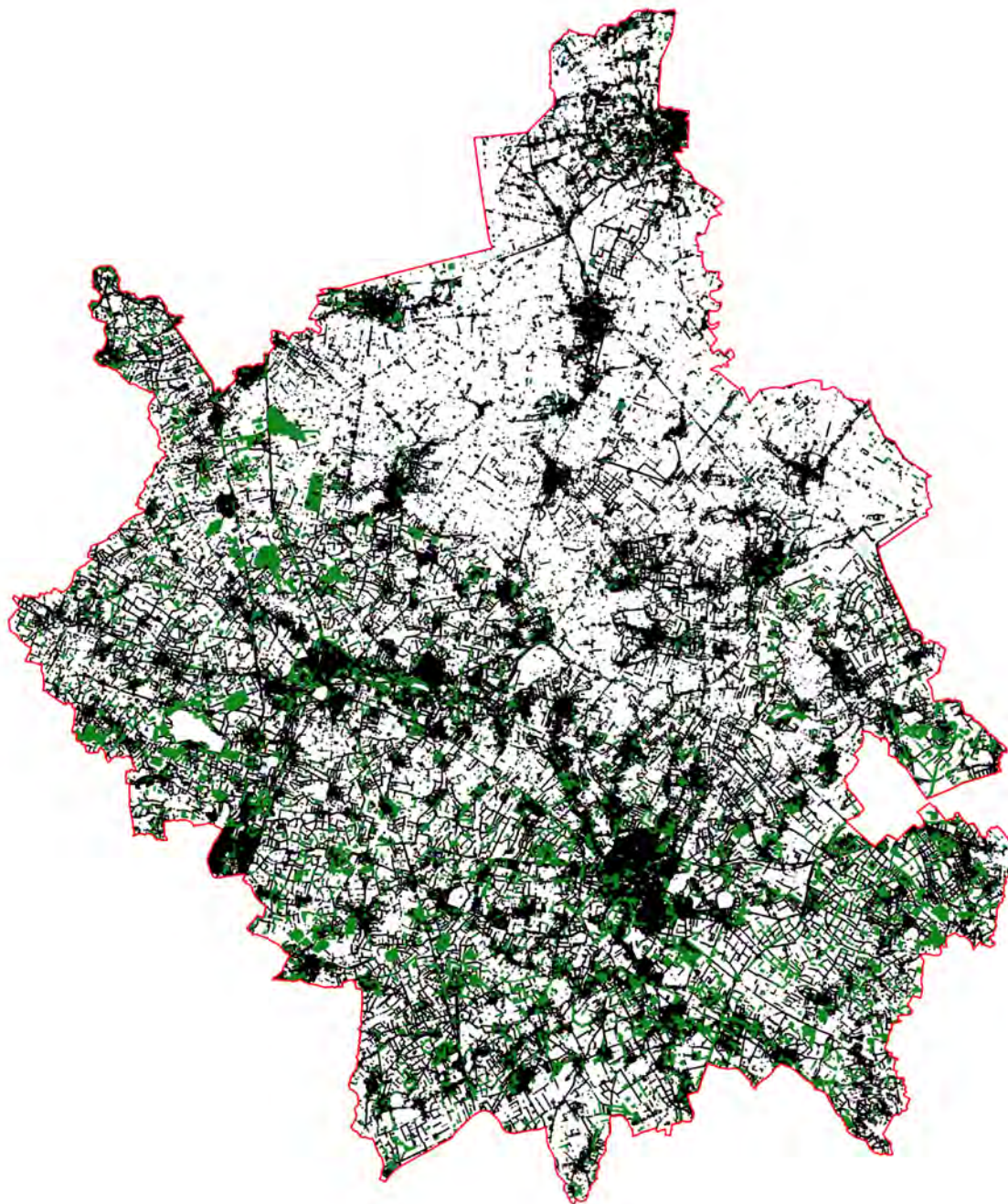


NFI = 254.03ha



Cambridgeshire Tree canopy

9377 ha within the
National Forest Inventory



Cambridgeshire Tree canopy

9377 ha within the
National Forest Inventory

10872 ha of additional
canopy outside the
National Forest Inventory

54% of Cambridgeshire's
canopy is outside woodland





12/1999

© 2015 Infoterra Ltd & Bluebird

Google earth



1945

Imagery Date: 1/1/1999 52°18'06.76" N 0°1'34.50" E elev 61 m eye alt 2.0 km



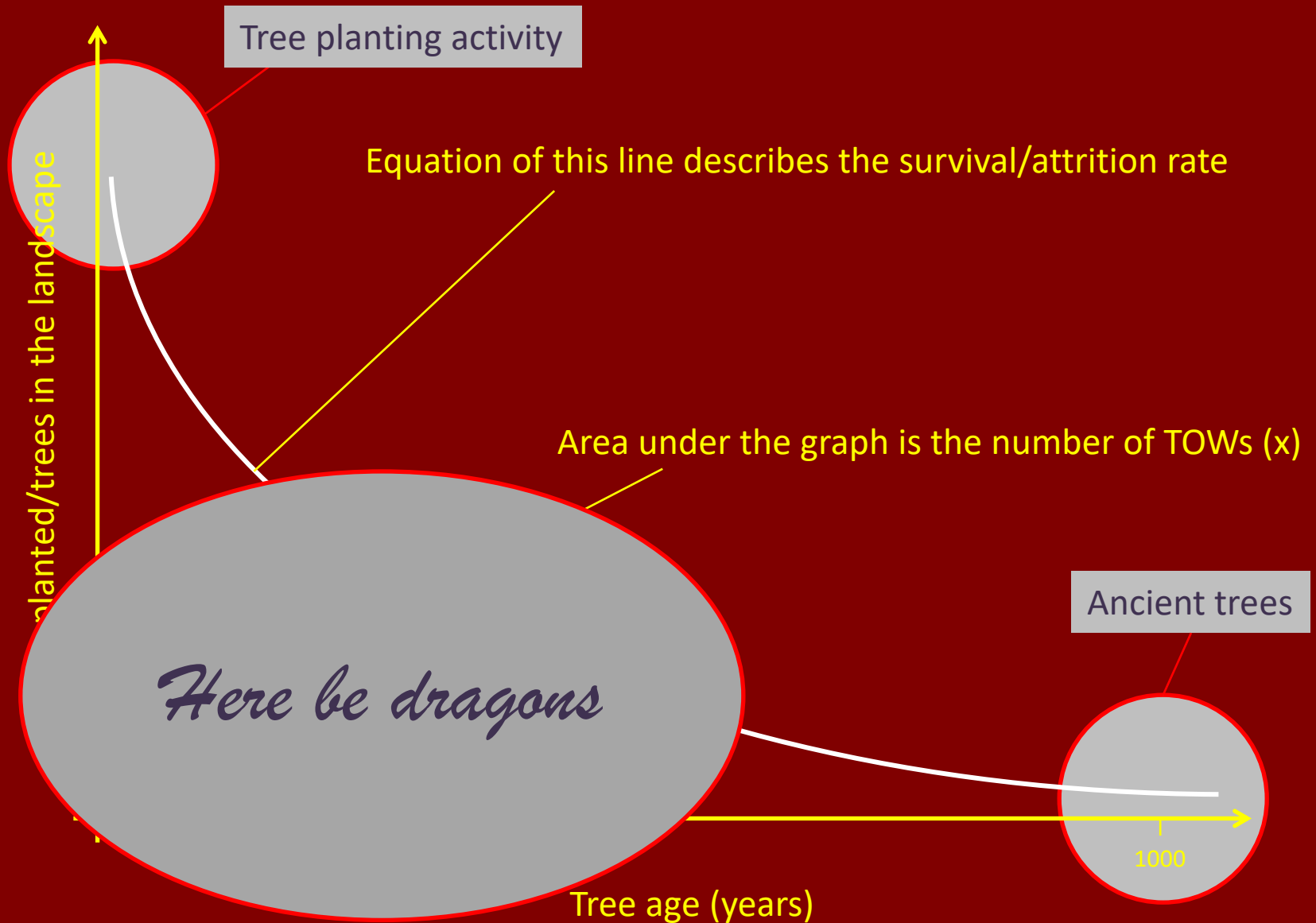
7/2008

Image © 2015 Setmapp ag plc
© 2015 Infoterra Ltd & Bluesky

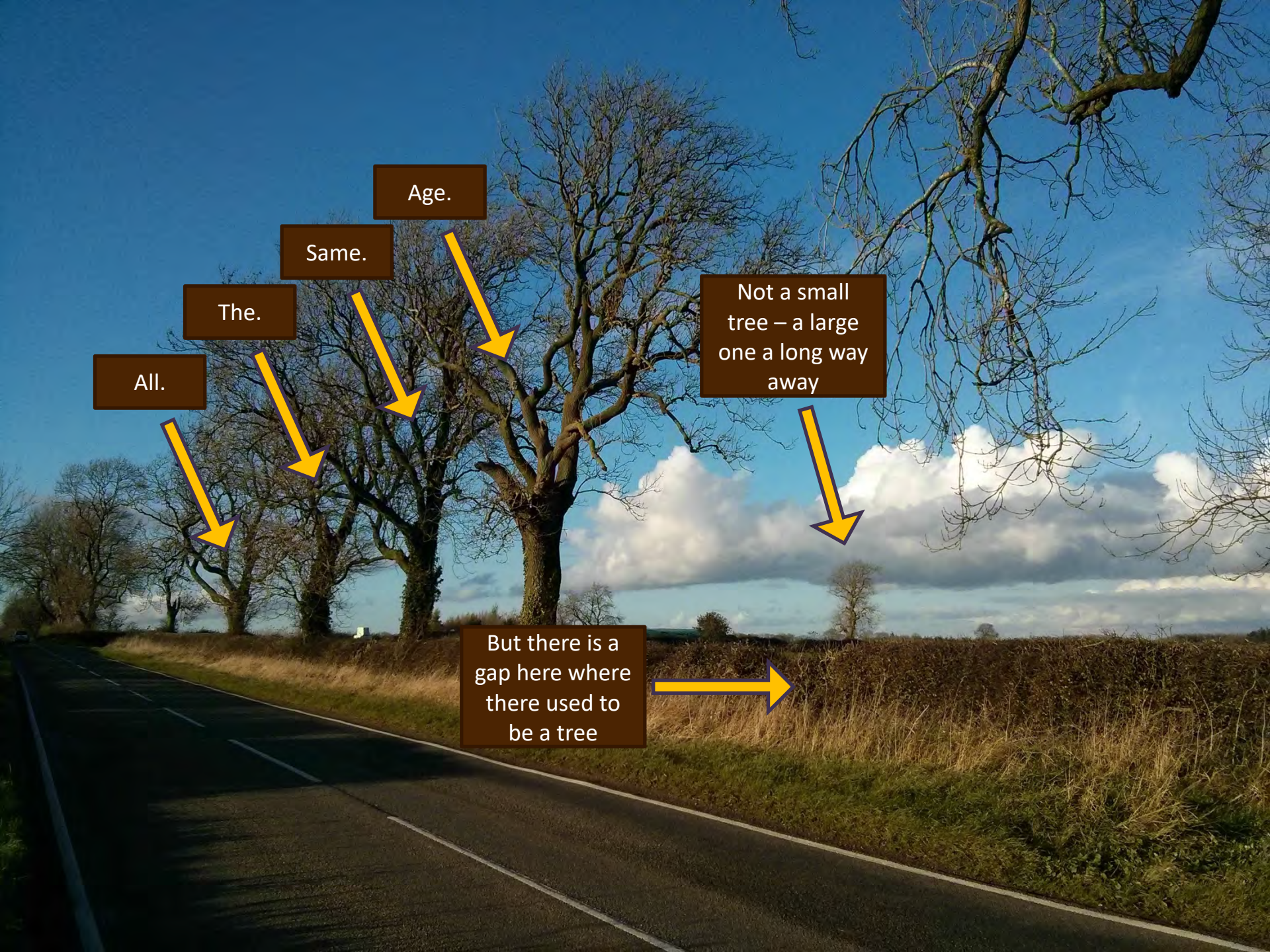
Google earth

1945

Imagery Date: 8/3/2007 52°18'06.76" N 1°01'34.50" E elev 60 m eye alt 2.0 km







All.

The.

Same.

Age.

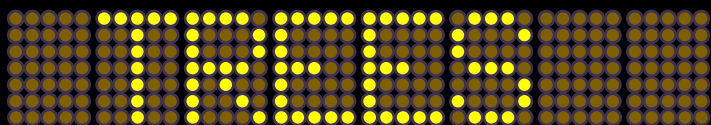
Not a small
tree – a large
one a long way
away

But there is a
gap here where
there used to
be a tree

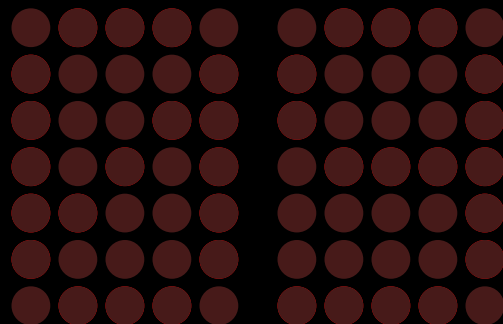
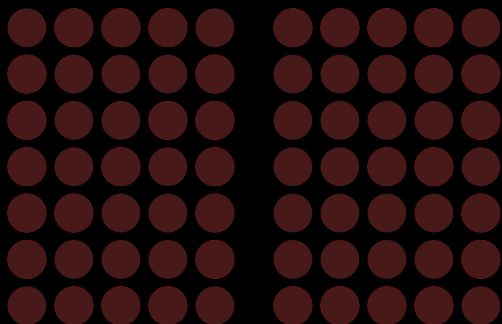
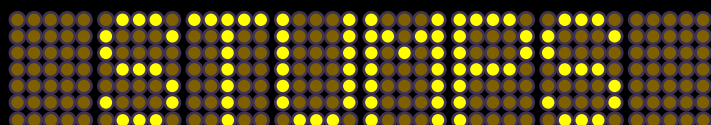


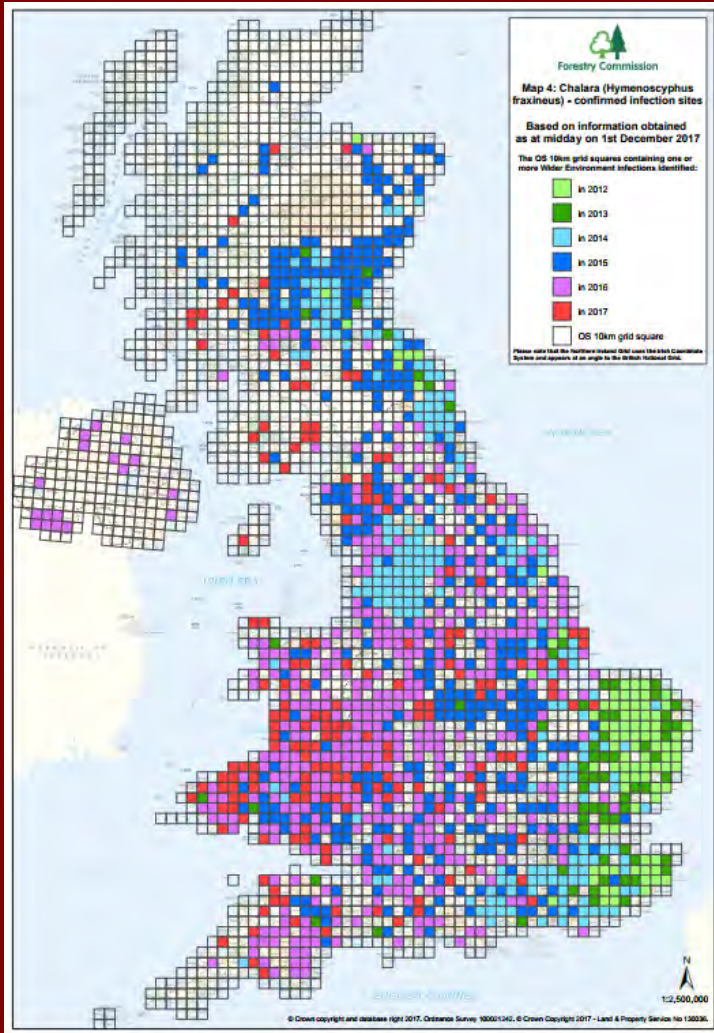


0 800 m



V

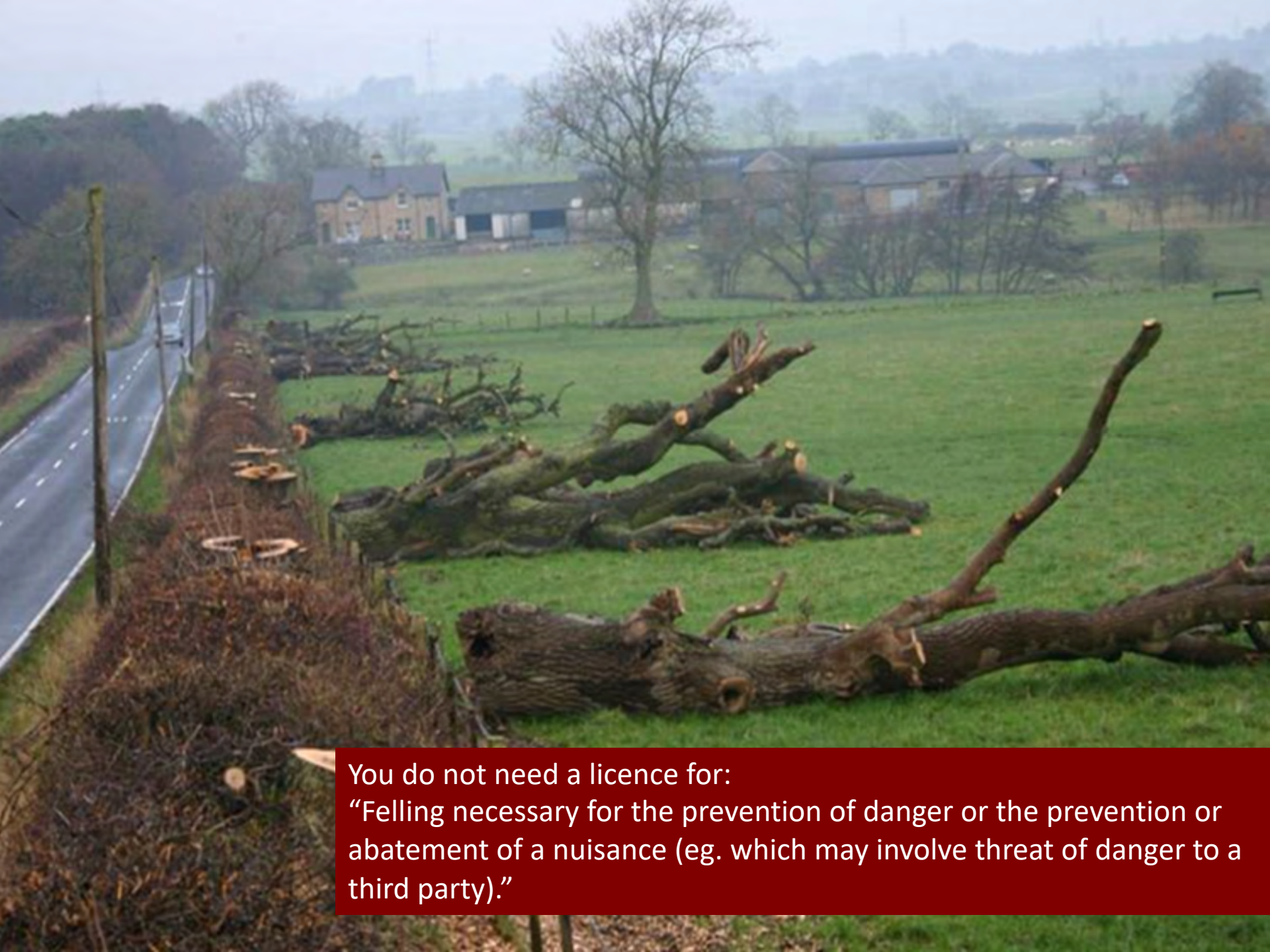




Ash dieback

- Fungal agent arrived ca. 2000
- European ash highly susceptible
- Affects all trees, young fastest
- No known “true” resistance
- Likely impact on UK massive





You do not need a licence for:

“Felling necessary for the prevention of danger or the prevention or abatement of a nuisance (eg. which may involve threat of danger to a third party).”











Thank you
for listening

nickatkinson@woodlandtrust.org.uk

03437705696



WOODLAND
TRUST

