

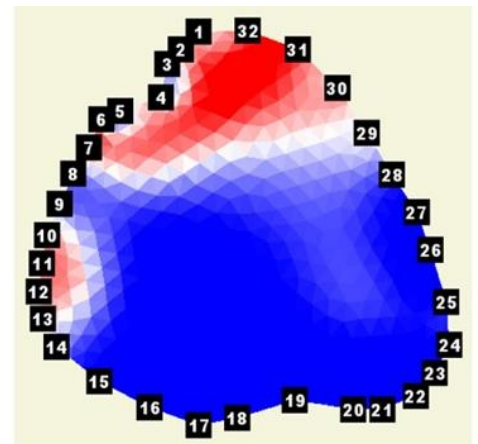
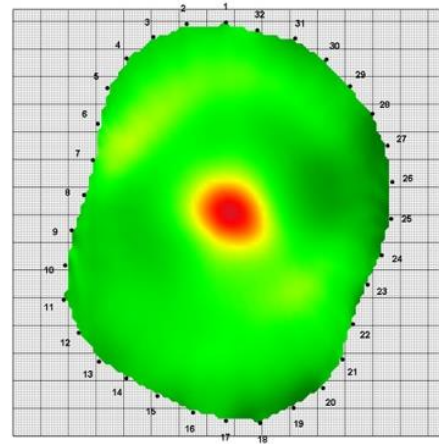
The FAKOPP Bluetooth Callipers are designed to be used in conjunction with Arborsonic 3D and ArborElectro Tomography systems.

The Callipers both speed up and improve the accuracy of sensor geometry measurements.

The 1100mm Callipers can be extended to 2000mm by the addition of an insert and can be calibrated in under 10 seconds.

Send accurate measurements directly to your Phone, Tablet or PC via Bluetooth® at the press of a button.

The software keeps you on track via audio instructions and all controls are via the single button control.



1100mm - from
£1995+VAT
Call for info



www.treediagnostics.co.uk

Call 07831 530563