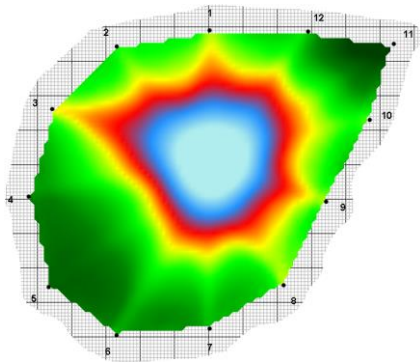
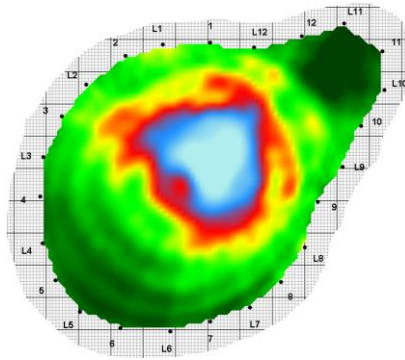


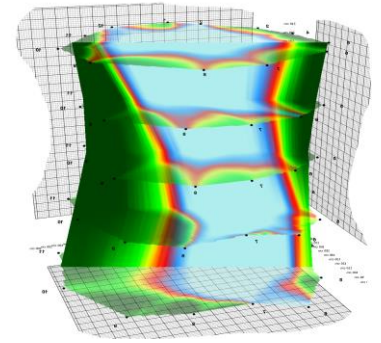
## The standard sensor package



## The NEW Ludwig sensors provide more detail



## Interactive 3D viewing of Tomograms



The Arborsonic 3D is a Sonic Tomography System, using up to 32 sensors enabling detailed assessment of trees suspected of decay or defect.

From as few as 8no. Piezo sensors and 8no. Ludwig sensors you can show details of internal tree defects that can be investigated, complete with built in Biomechanical information and safety-factor to inform management recommendations.

The new Ludwig sensors bring an improved level of detail at low cost. Helping the Arborsonic 3D to be the cutting edge for tree Tomography.

The Arborsonic software allows operators to easily calculate safety factors based on site images.

New operators receive start up training from experienced users allowing you to be up and running quickly.



8 Sensors from  
**£4985+VAT**  
Call for info

Visit [www.treediagnostics.co.uk](http://www.treediagnostics.co.uk)  
or call 07831 530563