

The ArborElectro – Is an Electrical Impedance Tomography System, it uses up to 32 sensors to provide a detailed assessment of trees suspected of internal decay or defect.

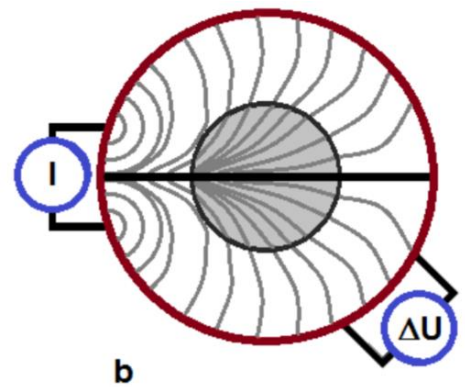
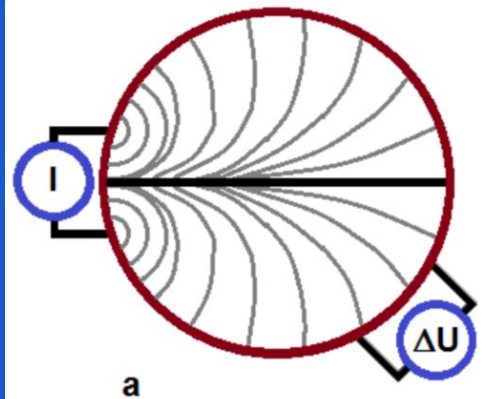
It is used to detect moisture and ion changes in trees in response to subtle internal changes - non-destructively.

The image top right shows changes due to
A - Fungal Colonisation, **B** - Impact damage &
C - Partially included stone wall .

It can be used to identify both the size and location of decay, fungal activity, a trees defensive response or signs of root damage.

It works by using electric resistivity measurements, the current is conducted ("I") into the tree whilst the voltage is measured ("ΔU"), image right.

In image a) the voltage pattern is uniform in a sound tree where as in b) voltage strength and pattern changes can be measured.



Prices from
£3995+VAT
Call for info