

PAST, PRESENT, FUTURE

History of TDAG

Martin Kelly
Chair Trees and Design Action Group
Director Land Planning
Capita

5th September 2016







Members of the TREES AND DESIGN ACTION GROUP



www.BristolStreetTrees.org



MAYOR OF LONDON



urbandesignlondon

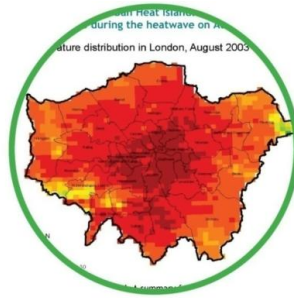


Original Mission Statement for TDAG in 2007

10 Point Action Plan

1. Integrated Solutions to the Urban Realm
2. Congruent Policies and Tree Strategies
3. Evidence Based Understanding and Research
4. Education and Public Awareness
5. Value (Economic, Environmental and Social), Funding and Revenue
6. 3-Dimensional London – Underground/ground/upperlevel
7. Trees Live More than the 30 year Development Cycle
8. Density
9. Public Realm Management and Funding for Aftercare and Maintenance
10. Townscape

**Urban Heat
Island Effect**



**Climate
Change**



Biodiversity



**Townscape
Character**



**Place Making /
Amenity**



Value

**Health &
Wellbeing**



**Cultural
Heritage**









This mid-1930s colour view is included for its rarity value. Shell Mex House and the Savoy Hotel feature behind the trees. The partly visible building on the extreme left is Hungerford House, a former generating station for street lighting.



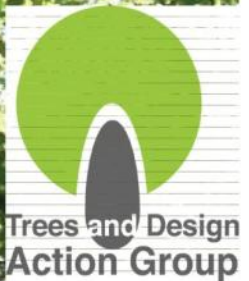




**NO TREES,
NO FUTURE**

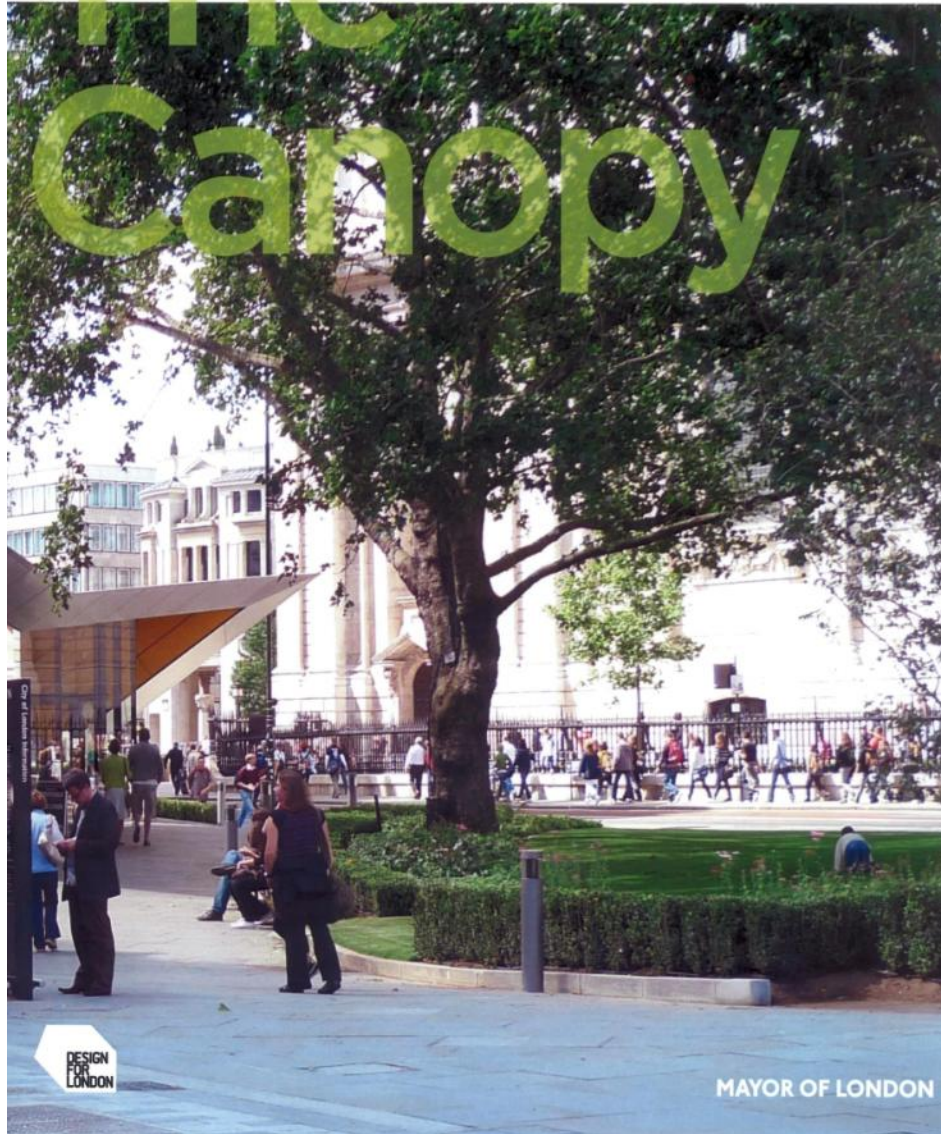
Trees in the urban realm

**Trees and Design Action Group
November 2008**



The Canopy

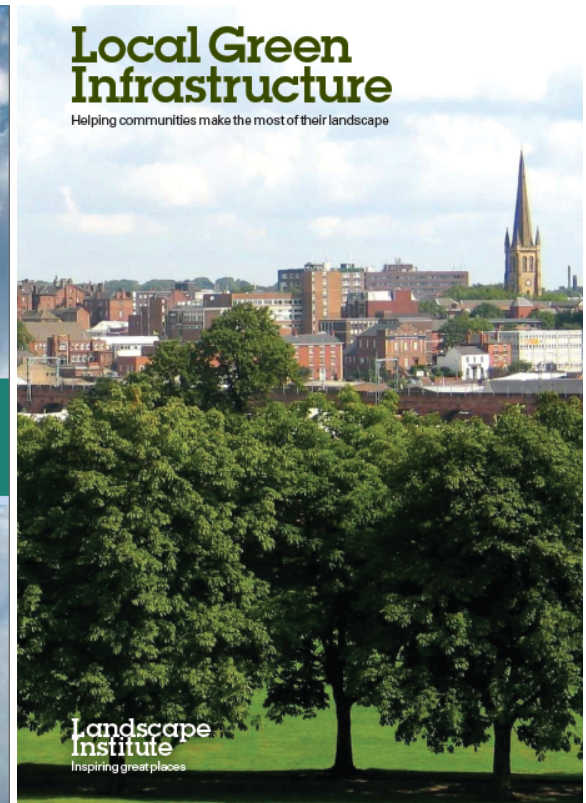
June 2010



Publications: GI Case Study

 HM Government

The Natural Choice:
securing the value
of nature



Mayor of London's Replacement London Plan

7.54 The Mayor has published the Tree and Woodland Framework that promotes the guiding principle of right place, right tree, taking account of the context within which a tree is to be planted and addressing the issue of planting species appropriate to expected future climates. Boroughs should take this advice and the emerging work of the Tree and Design Action group into account in producing LDF policies and determining planning applications.

Trees in the Townscape

A Guide for Decision Makers

Available at
www.tdag.org.uk

Endorse at
www.tdag.org.uk/endorse-trees-in-the-townscape.html



Trees & Design
Action Group

Trees in the Townscape

A Guide for Decision Makers



Trees in the Townscape

A Guide for Decision Makers



Landmarks

Cooling

Building
Energy
Saving

Muffled/Reduced
Street Noises

Sense of Place

Colourful
Seasonal Displays

Enhanced
Well-being

Attractive
High Street
Retail

Pocket Park

Community
Food Growing/
Urban Orchard

12 Principles

Plan

1/ Know Your Tree Resource
[Page 10](#)

Key Players
Champion
commitment at
committee or
board level

2/ Have a Comprehensive Tree Strategy
[Page 15](#)

Local Councillor Planner
Sustainability,
Housing, Highways,
Open space Officers
Tree Officer

3/ Embed Trees into Policy and Other Plans
[Page 20](#)

Businesses and residents associations
Lead policy writing
and enforcement

Key Actions

- Establish who needs to know what
- Build a big picture understanding of your urban forest
- Where needed, add more details
- Create a receptive environment through champions, engagement and consensus-building
- Define policies and develop an action plan
- Monitor, learn and review
- Adopt ground rules for tree management, including explicit standards for tree replacement and tree planting
- Dedicate resources to policy enforcement
- Get trees into other plans

Plant/Protect

7/ Procure a Healthy Tree
[Page 48](#)

Key Players
Demand and adhere to high quality works standards

8/ Provide Soil, Air and Water
[Page 52](#)

Tree officer
Site owner
Communities
Tree wardens
Contractors and sub-contractors
Tree voluntary organisations

9/ Create Stakeholders
[Page 56](#)

Widen knowledge, ownership and participation

Key Actions

- Understand tree production systems and use specifications
- Conduct nursery visits
- Make soil volume an upmost priority
- Ensure sufficient watering and maintenance
- Use trained individuals to do the planting
- Explore new planting technologies
- Involve local communities and train staff
- Ensure work on or near trees meets quality standards

Design

4/ Make Tree-friendly Places
[Page 30](#)

Key Players
Bring forethought into briefs and proposals

5/ Pick the Right Trees
[Page 35](#)

Planner/ Development Control Officer
Developer/ Site Owner
Designer
Tree officer
Engineer
Utilities providers
Arboriculturist
Nurseries

6/ Seek Multiple Benefits
[Page 40](#)

Integrate green and grey infrastructure for wider returns

Key Actions

- Favour larger trees
- Survey existing trees
- Include underground matters – utilities, foundations
- Draw up a robust tree protection plan
- Consider the expected benefits and functions of the trees
- Use the context to inform the selection process
- Investigate site constraints, such as soil types and light
- Call on specialist advice
- Look at how trees can be part of the infrastructure, such as calming traffic, providing enclosures, supporting economic regeneration and public health programmes

Manage/Monitor

10/ Take an Asset Management Approach
[Page 64](#)

Key Players
Prefer proactive over reactive interventions

11/ Be Risk Aware (Rather than Risk Averse)
[Page 69](#)

Site owner
Tree officer
Highway authority
Businesses and residents associations
Insurer
Arboriculturist

12/ Adjust Management to Needs
[Page 73](#)

Sustain attention to benefits over time

Key Actions

- Estimate the value of your tree resource
- Scale budgets and compensations accordingly
- Understand your duty of care
- Manage risks and benefits in tandem
- Rationalise tree inspections through zoning
- Computerise your logging, managing and inspecting works system
- Promote management regimes that foster biodiversity
- Consider the impacts of climate changes



**CERTIFICATE OF INCORPORATION
OF A
PRIVATE LIMITED COMPANY**

Company Number. 8464590

The Registrar of Companies for England and Wales, hereby certifies that

TREES AND DESIGN ACTION GROUP TRUST

is this day incorporated under the Companies Act 2006 as a private company, that the company is limited by guarantee, and the situation of its registered office is in England and Wales.

Given at Companies House, Cardiff, on 27th March 2013.



Companies House
— for the record —

The above information was communicated by electronic means and authenticated by the
Registrar of Companies under section 1115 of the Companies Act 2006

The Companies Act 2006

Company Limited by Guarantee and not having a Share Capital

Memorandum of Association

of

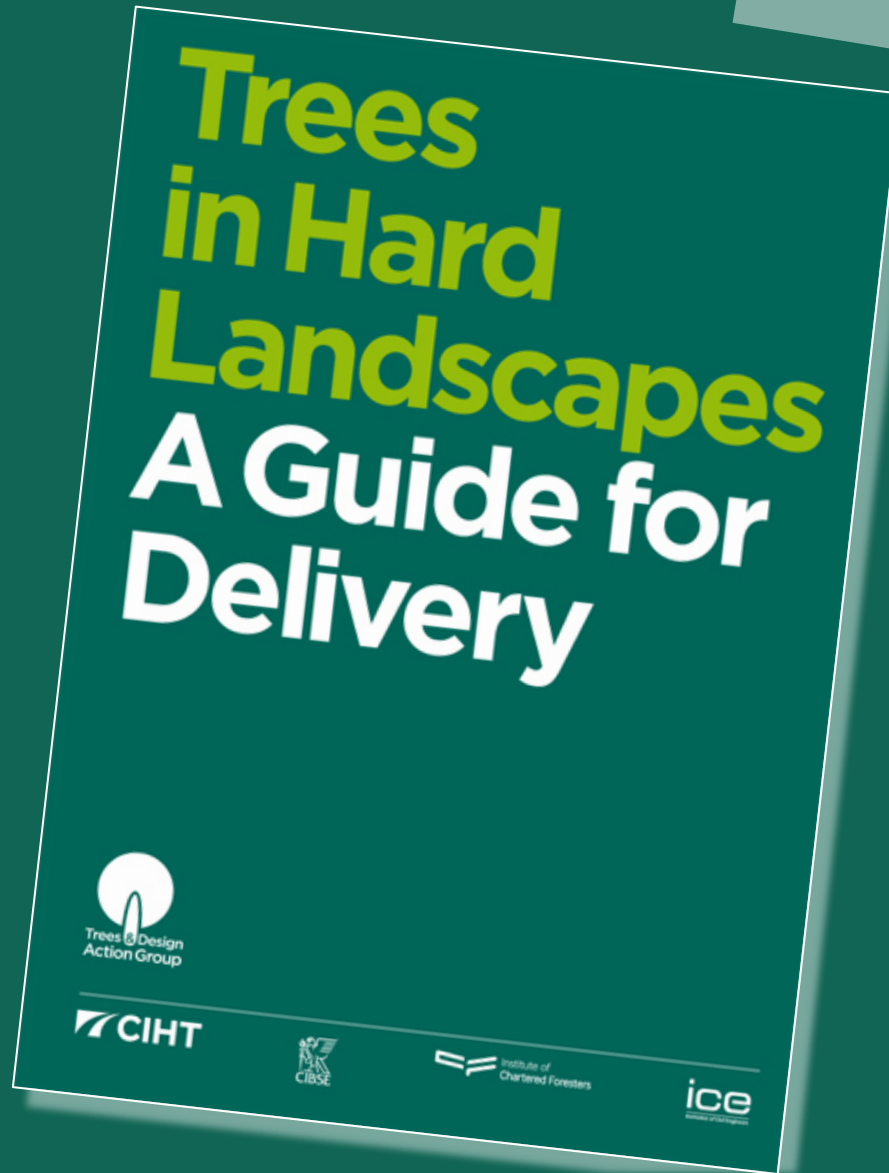
Trees and Design Action Group Trust

Bates Wells & Braithwaite London LLP
2-6 Cannon Street
London EC4M 6YH
(Telephone: 020 7551 7777)
www.bwbllp.com
211263/0001/001123057

Trees in Hard Landscapes A Guide for Delivery

Quick tour

LOOK INSIDE!







Collaborative Process

Securing value throughout the project lifecycle

Success with trees in hard landscapes requires a collaborative, cross-disciplinary process from project initiation through to design, implementation, maintenance and monitoring.

Such collaboration provides the foundation needed for other fundamental enabling factors such as access to funding and adequate expertise, resilient above- and below-ground design solutions, community support and competent delivery.

Aims

Examining the decision-making process of hard landscape projects, the aims of this section are to guide:

- Who to talk to and when.
- What information to get.
- What other actions to take and when to achieve the collaboration required to maximise the contribution trees can make.

Requirements

The main project requirements covered in this section are:

- The project brief.
- The scheme value assessment.
- The funding strategy.
- Tree-related policies and their enforcement.
- Surveys of utilities and of existing trees.
- The arboricultural method statement and tree protection plan.
- The tender documentation.
- The procurement strategy.
- The work sequence.

Wider Benefits

The wider benefits to be gained are:

- Better value for money from infrastructure investments.
- Enhanced ability for team members to learn and adapt to changing and complex local contexts and better anticipate potential issues and opportunities.

Section breaks





Quick Check

Are all key parties engaged in the collaboration required for success?

Design champion/Client representative(s)

Have you...

- ☐ Got clear policies for the protection, care and planting of trees and are committed to their enforcement?
- ☐ Communicated to the team the importance of the inclusion of environmental improvements, especially trees, for your vision of the project?
- ☐ Ensured the project brief, the team composition and the budget allocations will effectively support this vision?
- ☐ Before signing off design, checked that a consensus has been reached among the team on a detailed solution for successful integration?

Local authority planner

Have you...

- ☐ Sought expert guidance (from both a tree specialist and relevant references, such as *Trees in the Townscape*) to draft/update tree policy?
- ☐ Communicated tree protection, planting and care policies as well as associated site-specific requirements right from pre-planning meetings?
- ☐ Put conditions in planning approval to require survey proof confirming that the planting scheme is deliverable?
- ☐ Ensured effective enforcement of tree-related requirements?

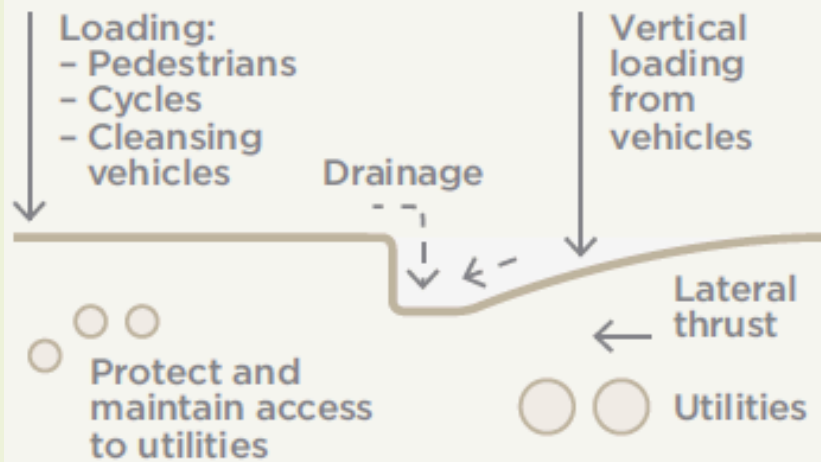
Project manager

Have you...

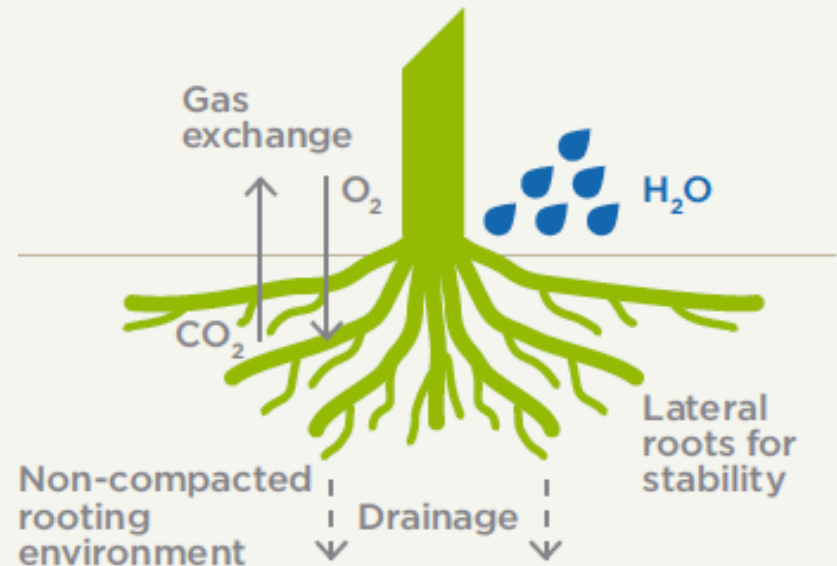
- ☐ Ensured the vision for the contribution trees make to the project objectives is well articulated as well as the value of using i-Tree Eco during consultation with members, other decision-makers and the wider public for project sign-off – making use of tree valuation and visualisation techniques, as appropriate?
- ☐ Ensured the right tree specialists and soil scientist have been commissioned?
- ☐ Facilitated a collaborative approach to funding tree-related enhancements, exploring all potential sources as described in this guide?
- ☐ Budgeted five-year aftercare for newly planted trees as part of the capital investment programme?
- ☐ Explored advanced procurement with the design specialist(s) (in this case the landscape architect) to secure precisely the right tree species and specification?
- ☐ Ensured the team composition includes the right tree expertise – this might mean a short-term dedicated post for larger projects?
- ☐ Conducted the right underground surveys at the right time: initial survey from site visit and utility asset database at project initiation, and delivery accuracy survey at the beginning of the design phase?
- ☐ Ensured all necessary negotiations with statutory authorities have been carried out?

Checklists to recap

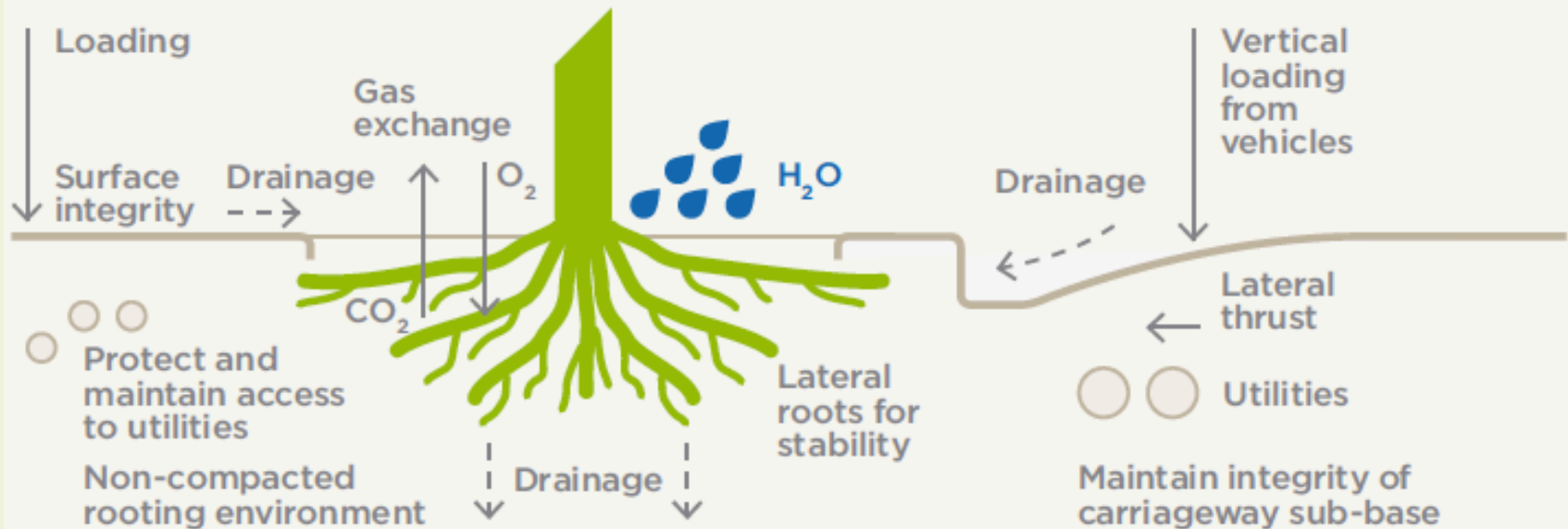
Highway needs



Tree needs



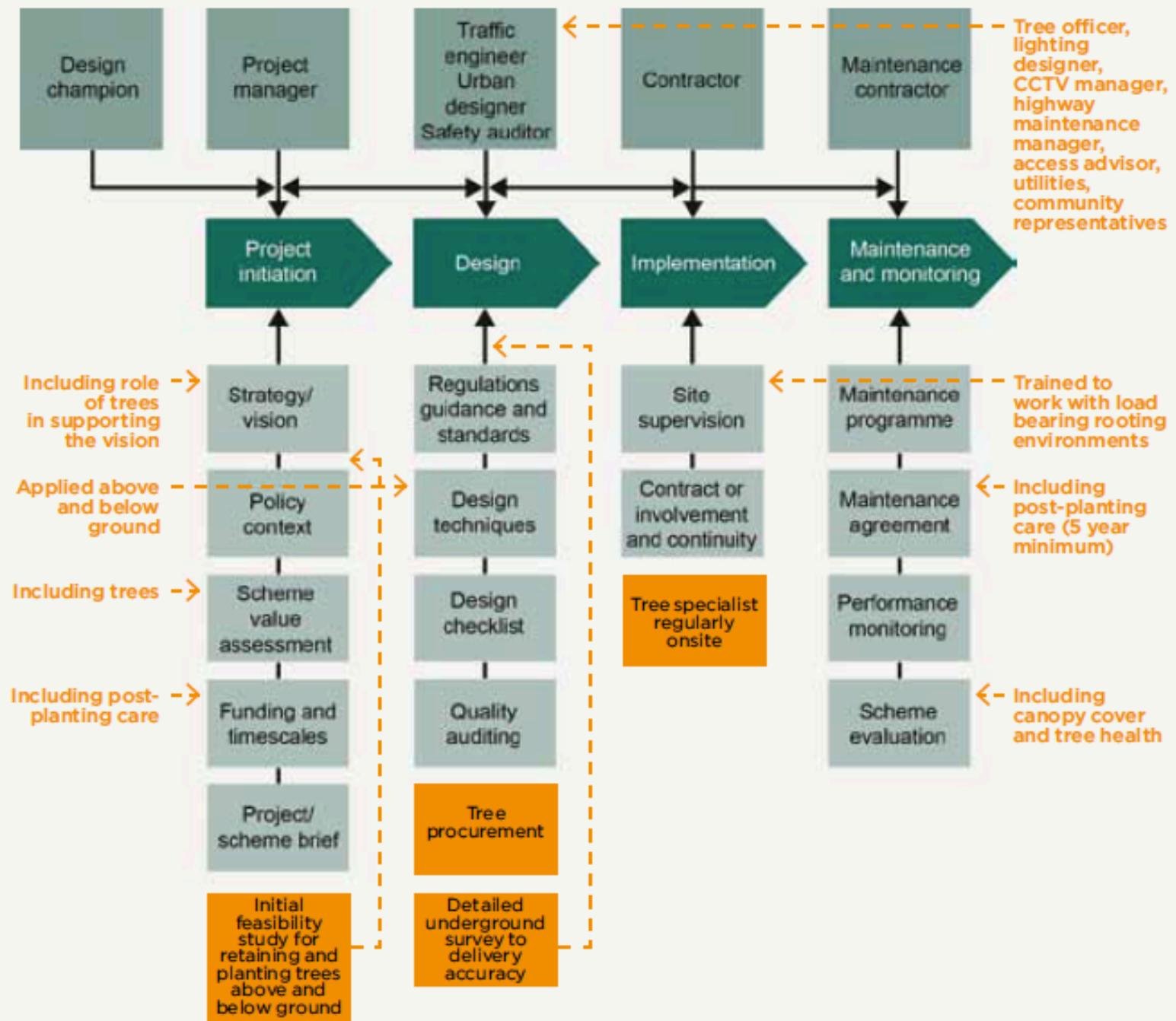
Setting the brief



Collaborative Process



Integrating trees into the LTN1/08 design process, flow, inputs and outputs



FUTURE

History of TDAG



Trees, Planning and Development

A Guide for Delivery

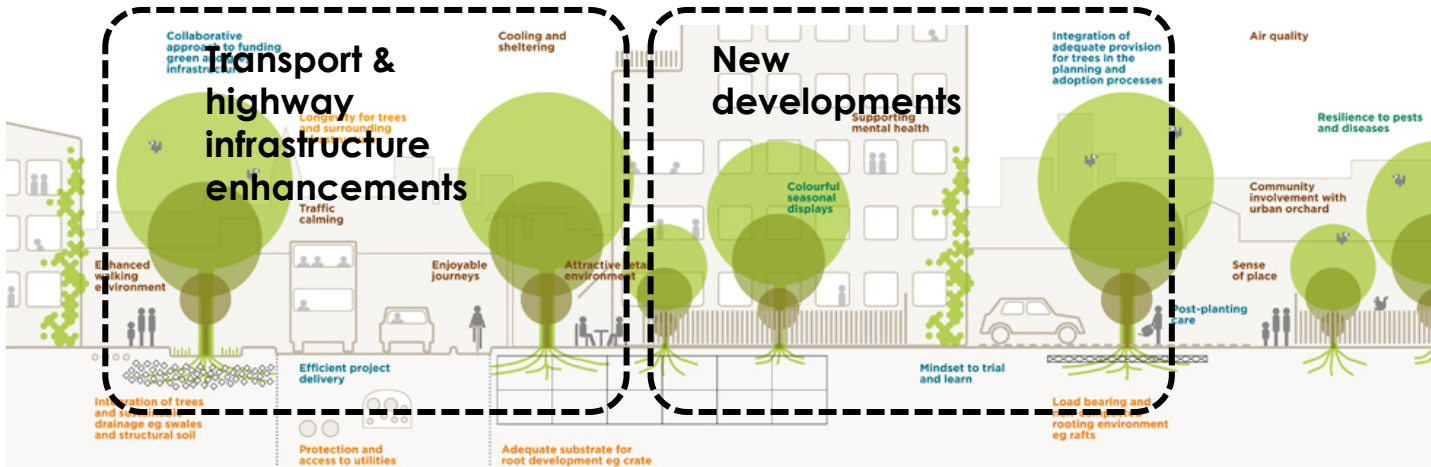
**Project Scope
July 2016**



Trees & Design
Action Group

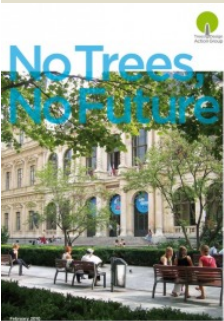
Due end 2017

WHY A NEW DOCUMENT? A lot of **changes** happens in cities through:



...either trees are made part of these two major delivery channels, or they are not!

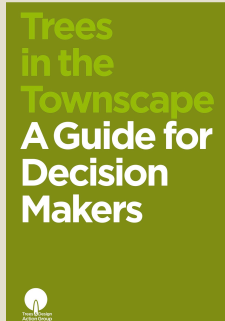
2010



2011



2012



2014



Next? (title & partners TBC)



OBJECTIVES

Trees, Planning and Development will provide a delivery guide on how to ensure that trees are a valued and value-adding component of new housing and commercial developments.

The effectiveness, clarity and compelling nature of the information will be rooted in:

- The **cross-disciplinary** perspective driving the research and final recommendations presented (incl. document structure, language, etc.)
- The **heavy reliance on interviews with practitioners and stakeholders** (ie. the people who are “doing it”) rather than existing publications alone as a research method to develop the content of the guide.
- The **peer-review** process overseeing the work
- The systematic use of case study **examples**
- The attention given to **document structure & format ergonomic** and the use of **visual illustrations**
- The relevance of the **partnership underpinning the development and marketing of the document**

(2) CLIMATE CHANGE

Land use and design choices have to respond to climate change – new build cannot be adding to the existing 'retrofit challenge'.

Good integration of trees in a scheme provides cost-effective climate proofing and can support mitigation measures.

(1) HOUSING CRISIS

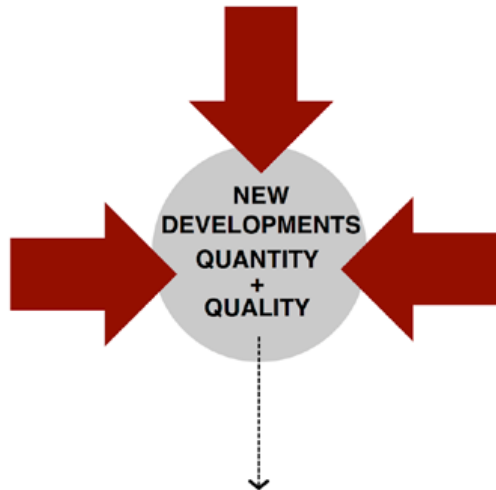
An urgent need to speed up and increase the production of new housing.

Good integration of trees in a scheme can help enhance its viability and acceptability thus facilitating faster and increased delivery.

(3) PUBLIC HEALTH

The quality of the built-environment is a major determinant of contemporary public health issues.

Good integration of trees in a scheme has significant measurable positive impacts on the health of local residents and users.



No single “silver bullet” can address the major pressures new developments – especially housing – are currently under. Instead, a multifaceted and proactive approach is needed.

The effective inclusion of green infrastructure and especially trees in new developments can be one of the simplest measures, among a wider set of coordinated responses, used to make a positive contribution to all aspects of the challenge.

TDAG proposes to work with the built-environment sector to produce a practical guide exploring how not to miss the valuable contribution trees can make to the speedy delivery of resilient, resilient new developments and regeneration projects.

AUDIENCE?

LPA Tree Officers

LA Planning officers (Strategic Planning & Development Control)

Community Groups / Civic Societies involved in Neighbourhood Plans

LA Elected Member (planning Portfolio holder, Planning Committee members)

Developpers / House builders (technical directors)

Planning consultants

Designers (architects / Landscape Architects)

Arboricultural consultants

CONTENT?

Some overarching / context-setting points:

- **What the law says** re: trees and developments (TCP Act)
- Relevance of trees to fulfill or contributes to **other statutory requirements on LPAs**
- **Cost / benefit analysis** at different scales / from different perspectives
 - Development scale [private benefits]
 - Viability (land value, yield, property or rental value, etc.)
 - Density / livability
 - Drainage and building services
 - Servicing and access to utilities
 - Cumulative effects at neighbourhood or city scale [wider welfare benefits]
 - Impact of canopy cover
 - Impact of land use and local character

CONTENT?

How to provide an effective local policy context?

Embedding trees in strategic planning

- Local Plan: What makes a good policy statement on trees? What else should be in the local plan about trees? Examples wordings from adopted local plans
- Key supporting strategic documents:
 - Tree / Urban Forest Strategy
 - SPD on trees and development
- Setting standards and performance metrics for planting, protection, replacement and compensations. How to derive these standards so that they are robust and enforceable.
- Approaches to developer contributions and long term management: Section 106, Commuted Sums and Adoption issues. What is desirable? What is reasonable? What is practical?
- Good house keeping on TPOs and Conservation areas
- Site allocation and development briefs
- Annual Monitoring Reports

CONTENT?

How to effectively achieve tree-related objectives once development happens?

Embedding trees in development management

- Communicating and enforcing clear ground rules :
 - Pre-application meeting
 - Planning conditions – good wording examples
 - Monitoring
- Designing with trees: reminder of fundamentals 'right place, right tree'
 - Integration with utilities, drainage, approach to foundation design and other hard landscapes
 - Understanding tree needs
- Step-by-step Case/Project management: highlight what can go wrong and how to get it right
 - Pre-consent
 - Consent
 - Post-consent

MARKETING STRATEGY / PARTNERS?

The strength of the partnership and relevance of the partners involved is essential.

Co-Branding by:

- RTPI
- RIBA
- RICS
- HBF
- LI
- AA

RIBA



....foreword by Planning Inspectorate?



Planning
Inspectorate

FUNDERS?

- Large house builders
- Developers (Grosvenor, Peel, etc)
- Arbor Day Foundation
- ??????

- Greater London Authority
- BHSLA
- JP Consulting
- GreenBlue Urban
- DeepRoot
- Urban
- Barrell Tree Consultancy
- Cedarwood Tree Care and Consulting Arborist Society
- Wharton Arboriculture



Sponsorship

The development and dissemination of Trees, Planning and Development: A Guide for Delivery is entirely funded through sponsorship.

All sponsor funding the research and production of the document will be recognised with their logos in the Acknowledgement section of the guide, in addition to being named on the TDAG website, on the page dedicated to the publication. There is no set contribution amounts for sponsoring the research and production of TDAG document: all organisations, whether small or large, are invited to make contributions commensurate to their means and are treated equally.

In addition, sponsors funding training seminars are offered the opportunity to have a stand at the dissemination event they contribute to, with opportunities to engage with the audience over breaks. Minimum contributions per seminar are set by TDAG for each event based on actual event costs.

For more details on sponsorship arrangements, please contact **Sue James** at suejamesriba@gmail.com | 07906 849674

PAST, PRESENT, FUTURE

History of TDAG

Martin Kelly
Chair Trees and Design Action Group
Director Land Planning
Capita

5th September 2016

