

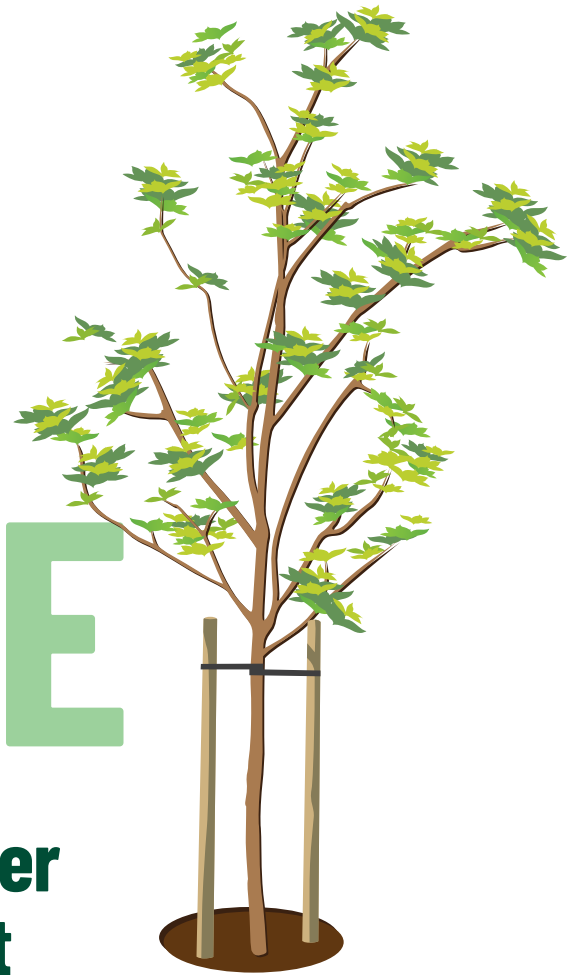


Arboricultural
ASSOCIATION
Tree Care Supporter



Arboricultural
ASSOCIATION
trees.org.uk

WHERE TO PLANT A TREE



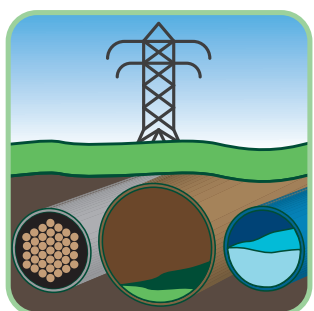
When planting a tree it is very important to consider where it is going to be located, taking into account the short, medium and particularly the long-term implications.

Trees grow! And if you want your tree to mature into an established specimen which delivers all of the wonderful benefits that trees deliver, then it needs to be **positioned in the right place.**

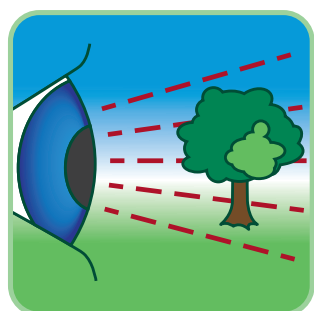
Some of the considerations listed here apply more to planting in hard landscapes (such as street trees) than soft landscapes (such as parks or gardens) but they all need to be thought about.

This guidance note should be read in conjunction with the other notes in this series, especially **What tree to plant?**

Often, the decision about **where** to plant and **what** to plant will go hand in hand.



Above and below-ground utilities



Safety sightlines



Potential obstruction of views



Proximity to structures and infrastructure



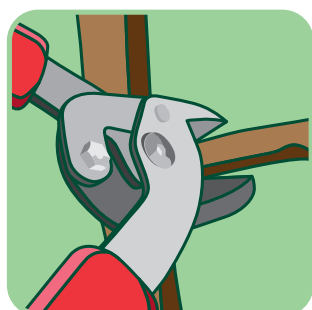
Proximity to existing trees or other vegetation



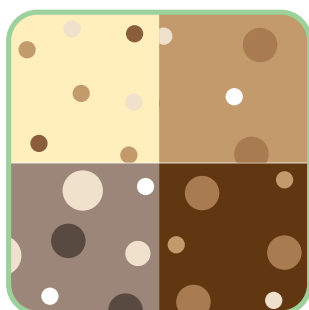
Proximity to roads, pavements and desire lines



Current land usage and local heritage



Access for maintenance



Underground conditions, including soil

IMPORTANT SAFETY NOTICE:
Underground utilities can kill.
Always make sure it is safe to dig before you start.

Always consult an arboricultural professional if in any doubt about tree care.

For further information, including training and publications, please visit trees.org.uk.



Young Tree Establishment #1

www.treecare.org.uk | www.trees.org.uk
Tree Care Supporter | Arboricultural Association

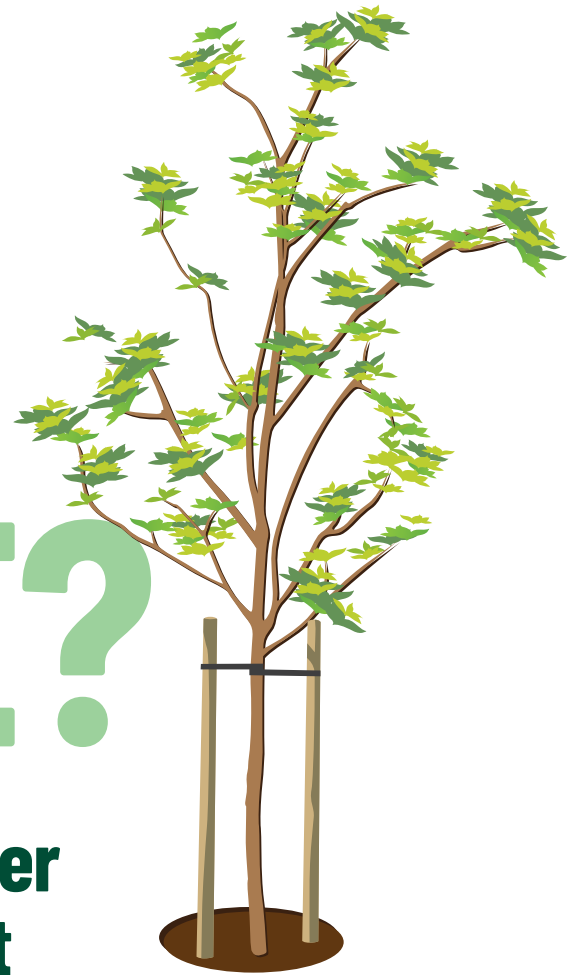




Arboricultural
ASSOCIATION
Tree Care Supporter



Arboricultural
ASSOCIATION
trees.org.uk



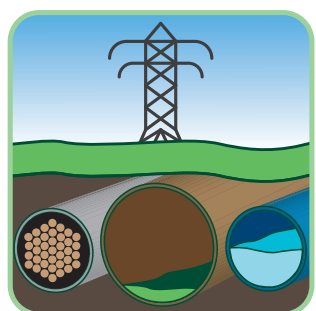
WHERE TO PLANT A TREE?

When planting a tree it is very important to consider where it is going to be located, taking into account the short, medium and particularly the long-term implications.

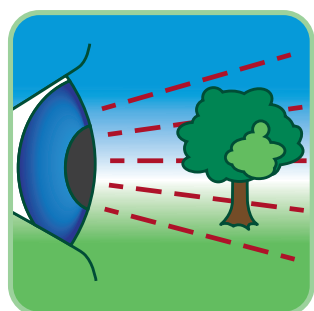
Trees grow! And if you want your tree to mature into an established specimen which delivers all of the wonderful benefits that trees deliver, then it needs to be **positioned in the right place**.

Some of the considerations listed here apply more to planting in hard landscapes (such as streets) than soft landscapes (such as parks or gardens) but they all need to be thought about. This poster should be read in conjunction with the others in this series, especially **What tree to plant?**

Often, the decision about **where** to plant and **what** to plant will go hand in hand.



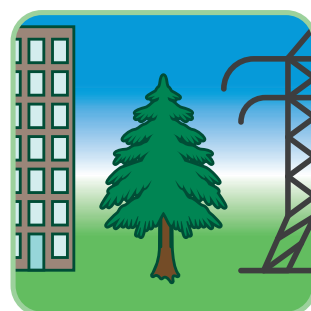
Above- and below-ground utilities



Safety sightlines



Potential obstruction of views



Proximity to structures and infrastructure



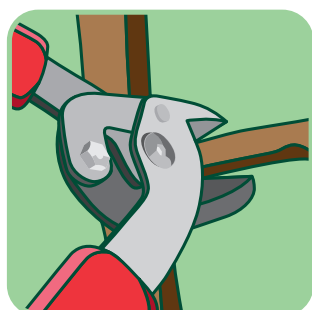
Proximity to existing trees or other vegetation



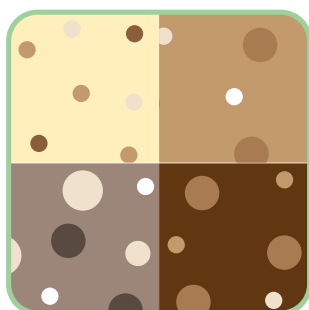
Proximity to roads, pavements and desire lines



Current land usage and local heritage



Access for maintenance



Underground conditions, including soil

IMPORTANT SAFETY NOTICE:
Underground utilities can kill.
Always make sure it is safe to dig before you start.



Always consult an arboricultural professional if in any doubt about tree care.

For further information, including an introductory guide to young tree establishment, visit trees.org.uk.



www.treecare.org.uk | www.trees.org.uk
Tree Care Supporter | Arboricultural Association